

Good Oil Conference 2010

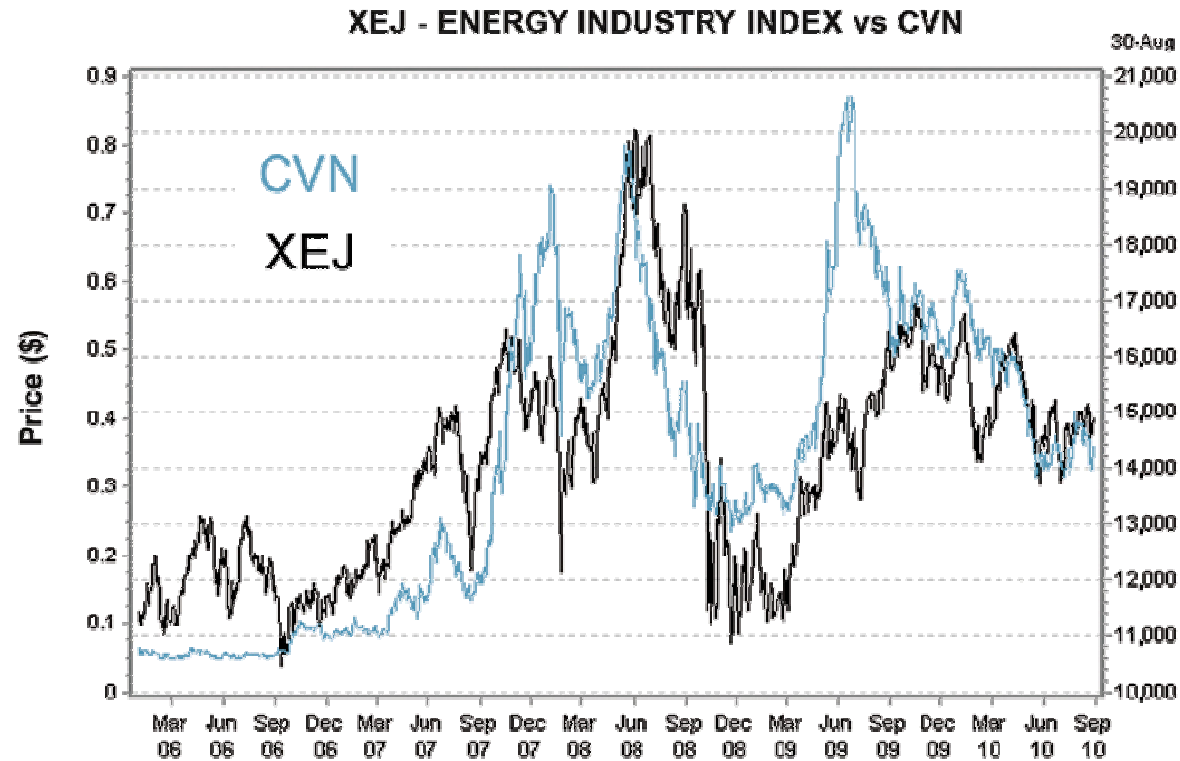
Ted Jacobson



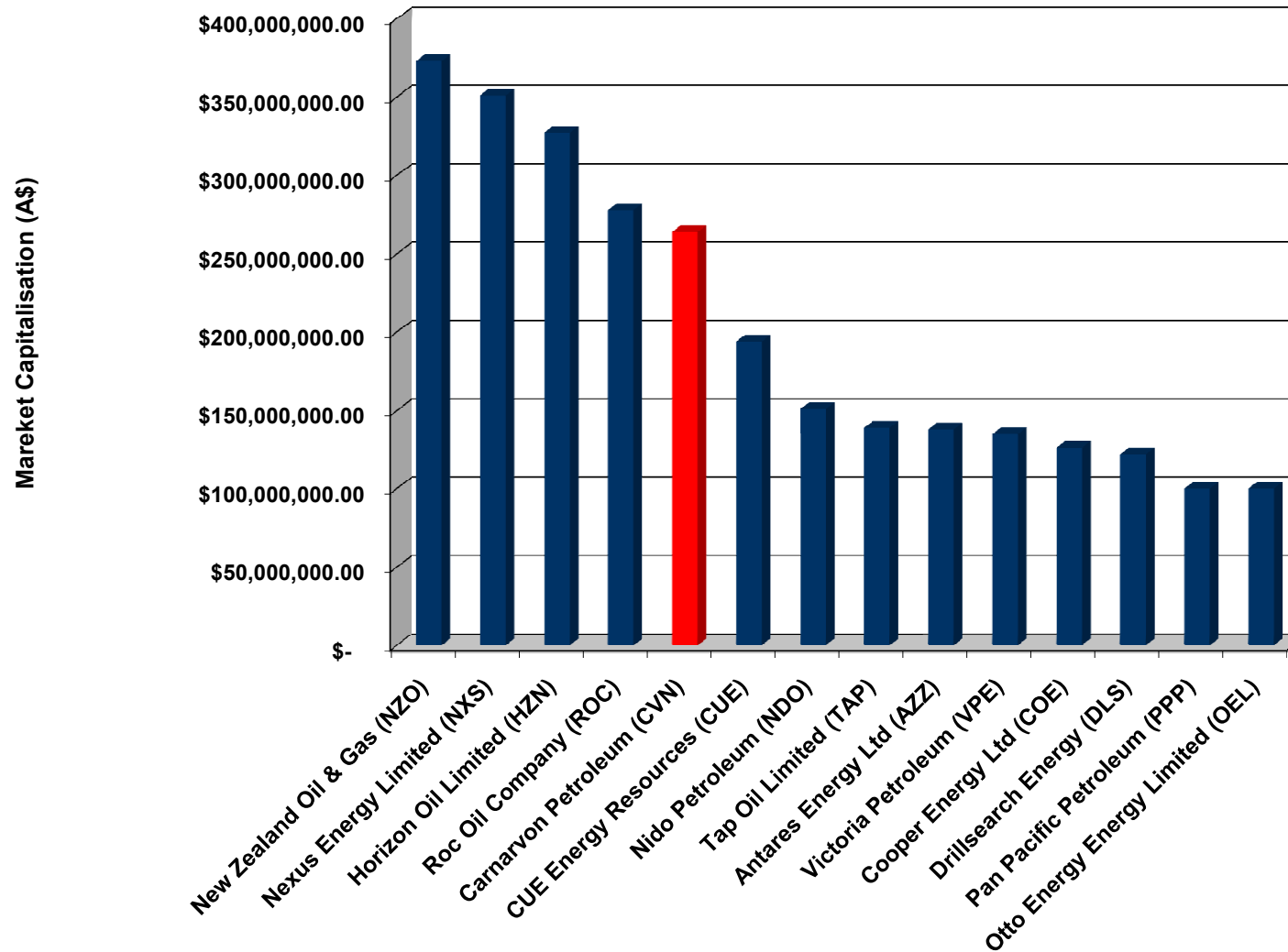
www.carnarvon.com.au

Capital Structure

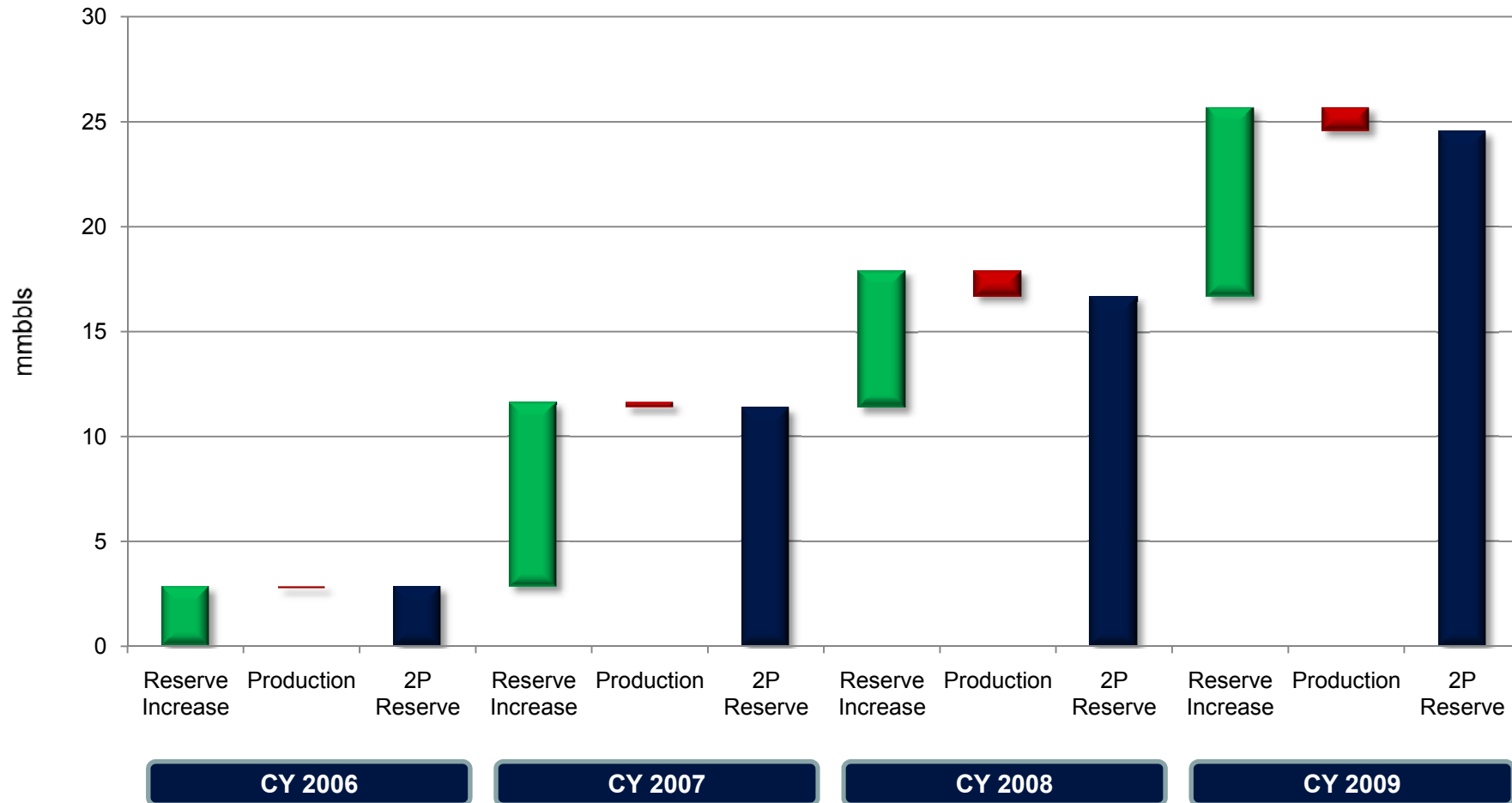
| | | | |
|----------------------------------|---------------|---|------|
| • Issued shares | 687m | <u>Significant Shareholdings (12 Aug 2010)</u> | |
| • Options | nil | Currently there are no significant shareholders | |
| • Share price (as at 4 Aug 2010) | <u>\$0.40</u> | | |
| • Market capitalisation | \$275m | Directors & staff hold | 9.0% |



Peer Comparison



Reserves (net to CVN)



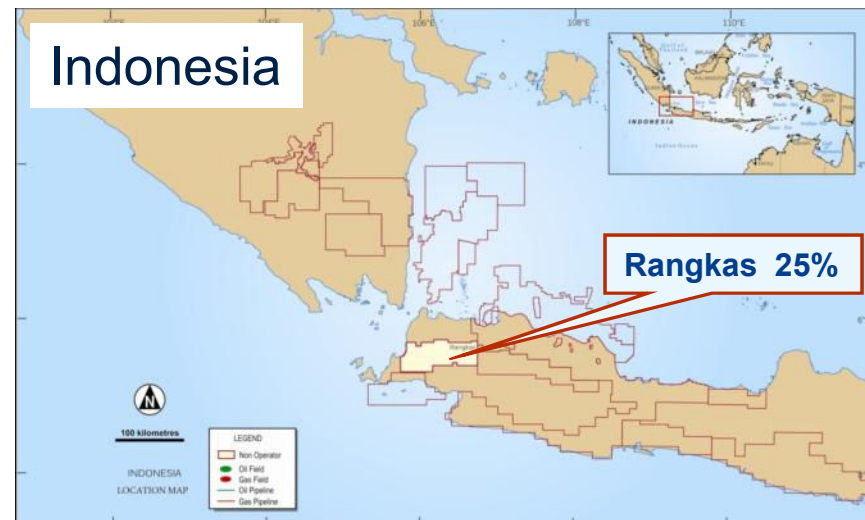
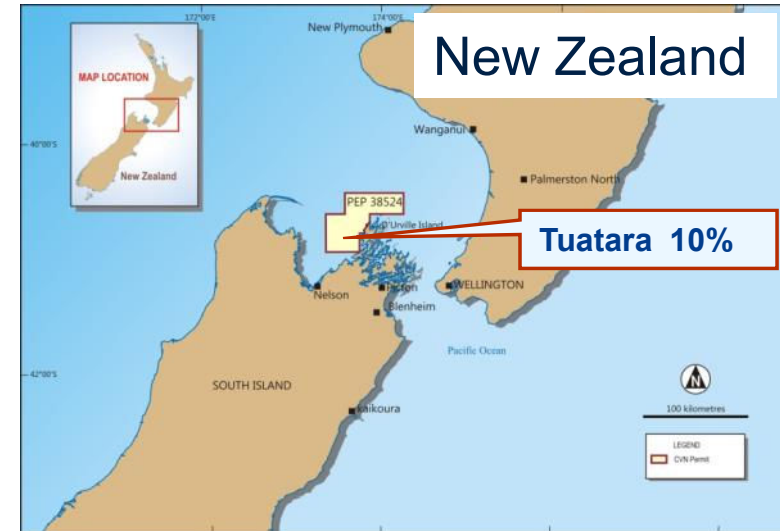
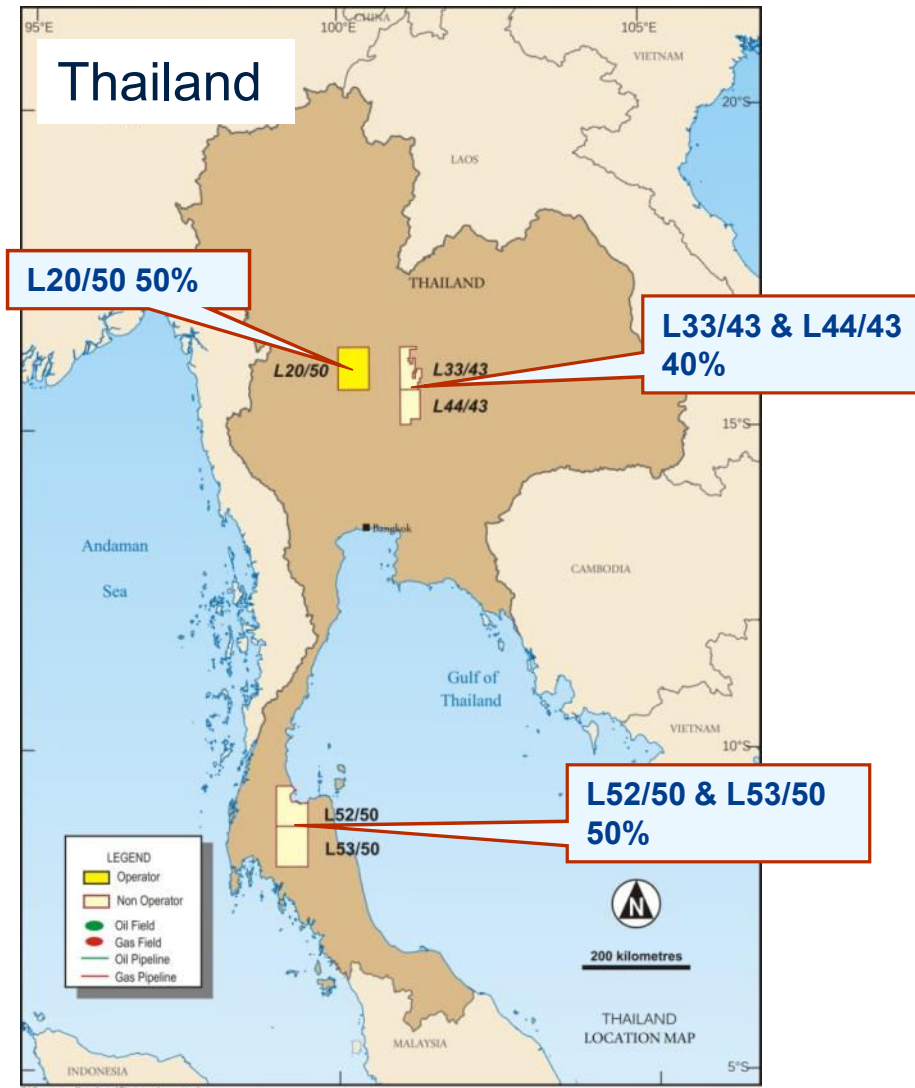
Strong potential reserve growth with 57mmbbls in 3P reserves

Key Metrics

| | |
|-----------------------|----------------|
| Production (net) | 3,000 bopd |
| Market capitalisation | A\$275m |
| 2P reserves (net) | 24.5 mmbbls |
| 3P reserves (net) | 57.0 mmbbls |
| Reserve life | 25 years |
| EV / 2P reserves | A\$11.25 / bbl |
| EBIT / bbl | A\$43.25 / bbl |
| NPAT / bbl | A\$16.60 / bbl |

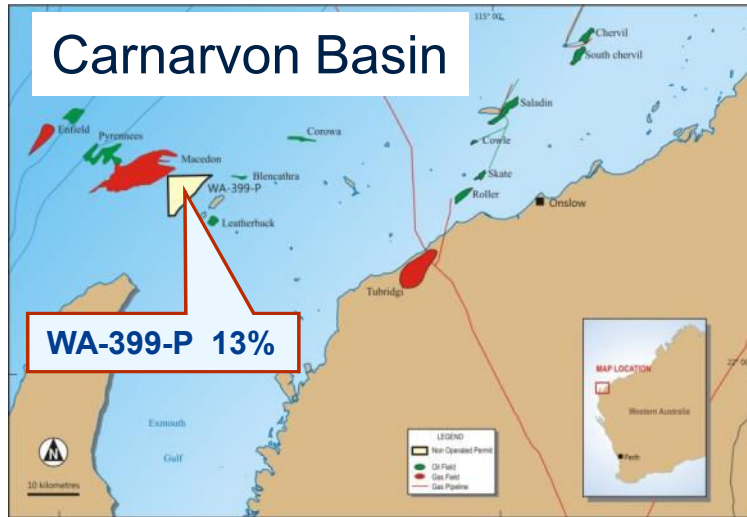


PROJECTS - International

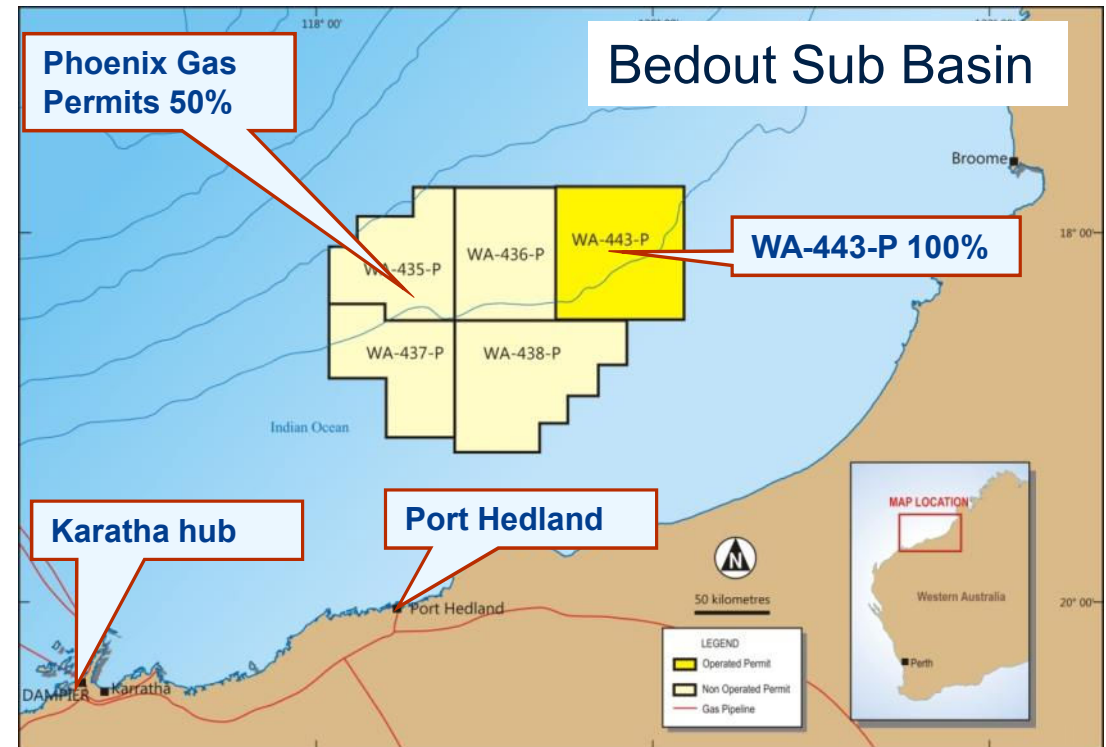


CVN's focus is SE Asia & Australasia

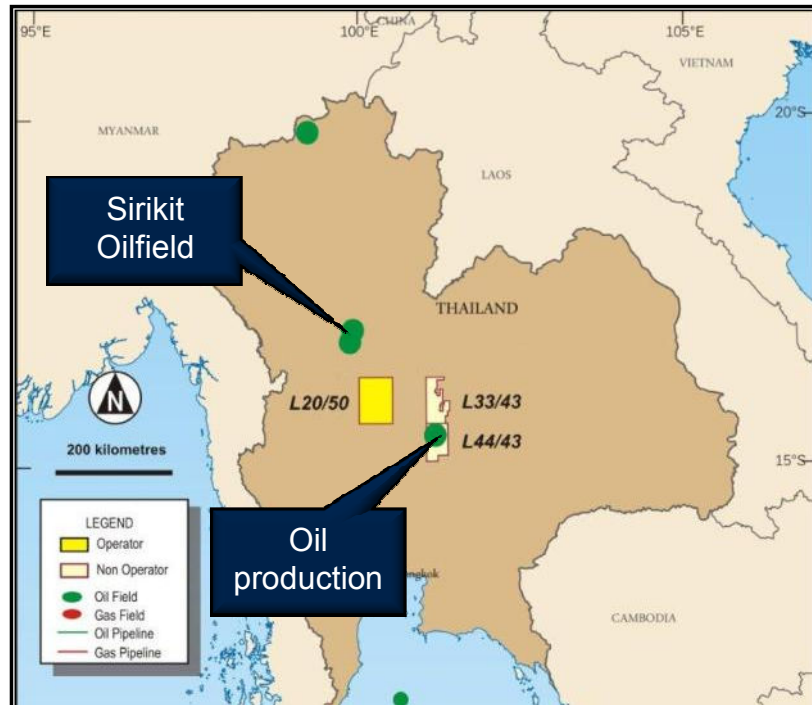
PROJECTS - Australia



WA 399-P farmed out
CVN retains 13%
for free carry through 3D Seismic



THAILAND - Permits



L33/43 Carnarvon 40%
Exploration & Development
Ongoing drilling

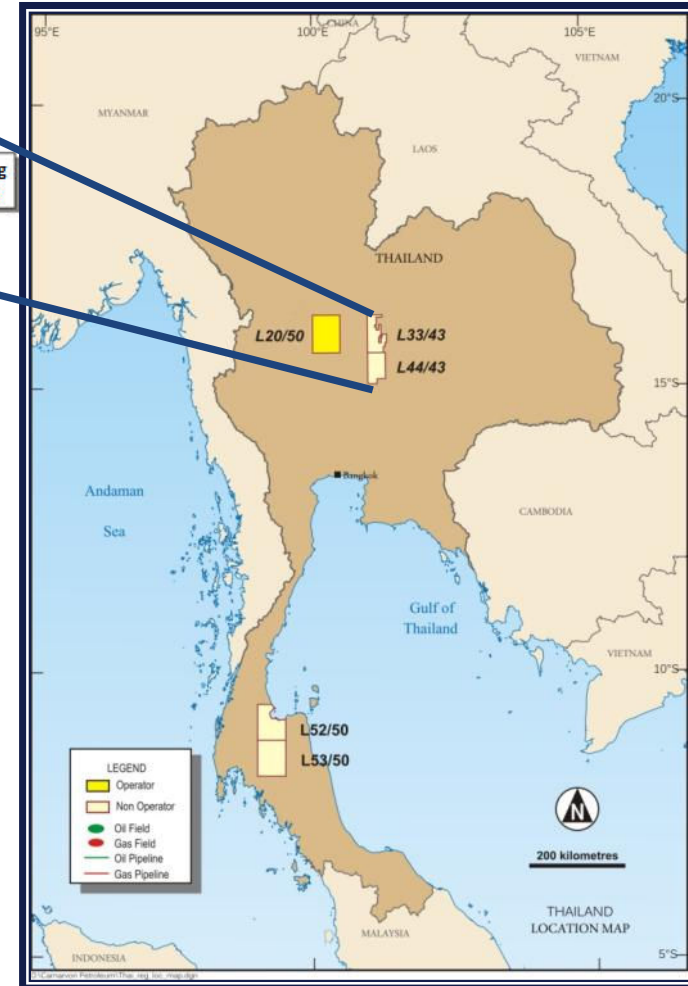
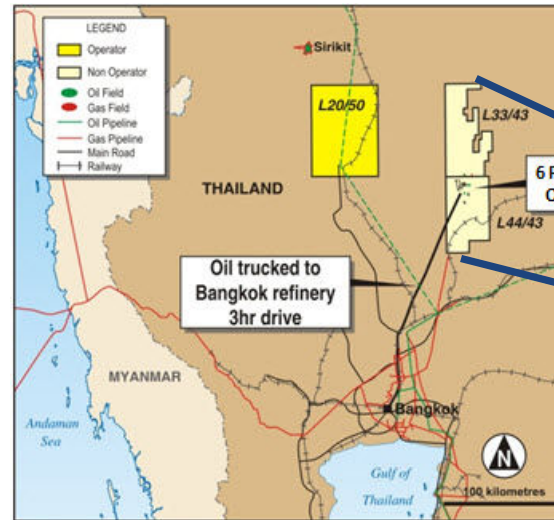
L44/43 Carnarvon 40%
Production & Exploration
Ongoing drilling

L20/50 – Carnarvon 50% & operator
Exploration
Drilling 4 Qtr 2010

L52/53 & L53/53 - Carnarvon 50%
Seismic 2011

THAILAND - L44/43 Overview

High margin
production with
exploration upside

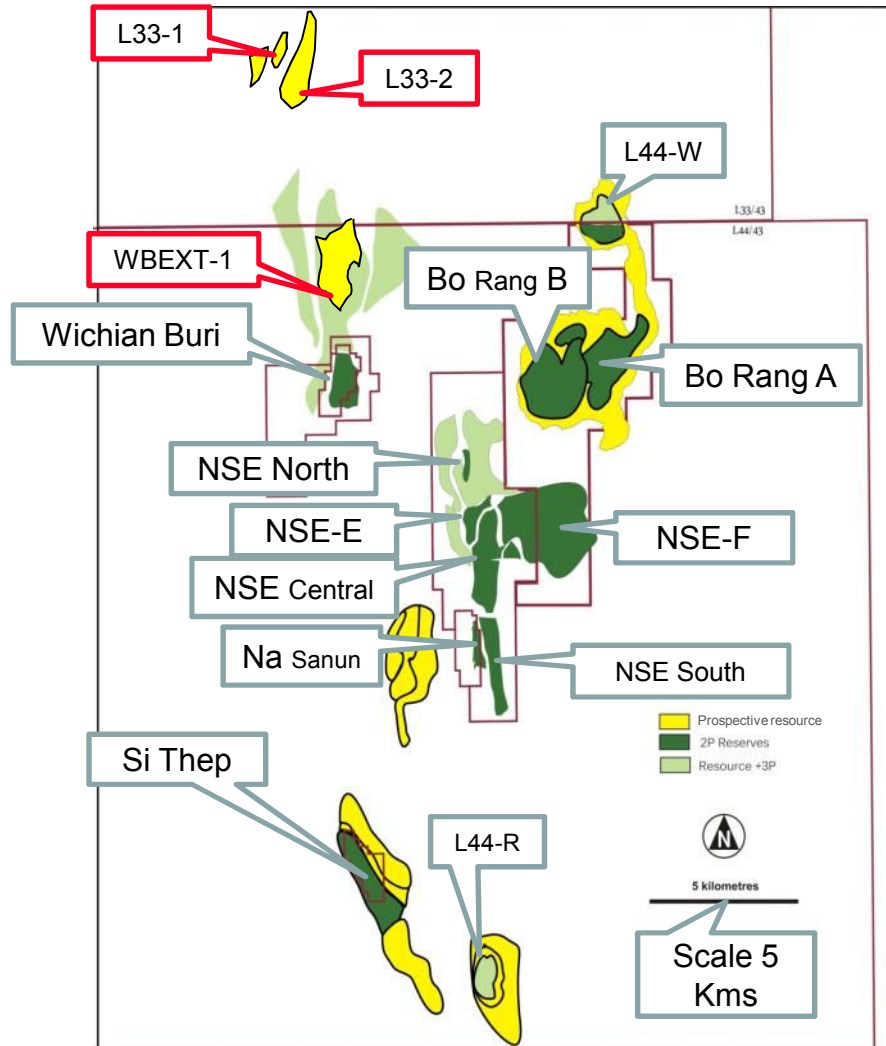


Carnarvon 40% POE Operator

- Onshore close to quality infrastructure
- Opex & trucking ~US\$10.80/bbl
- Depreciation / amortisation ~US\$7.20/bbl (*)
() Based on current accounting policy and estimates*
- Production ~1.0 mmbbls p.a. net
- 2P reserves of 24.5 mmbbls net

High margin long life field

THAILAND - L33/43 & L44/43 Oil Fields



- Reserves spread across several oil fields notably Bo Rang A & B, NSE-F1 & NSE Central
- Six production licences
 - 20 year life
 - optional 10 year extension period
- 38 producing wells currently in operation
- New discoveries at WBEXT & L33-1,2
- Gaffney Cline & Associates audit the reserves as at 31 December each year
- At 31 December 2009 Gaffney Cline & Associates estimated 2P reserves of 24.5 mmbbls net to CVN.

THAILAND - Recent Drilling Results

L33/43

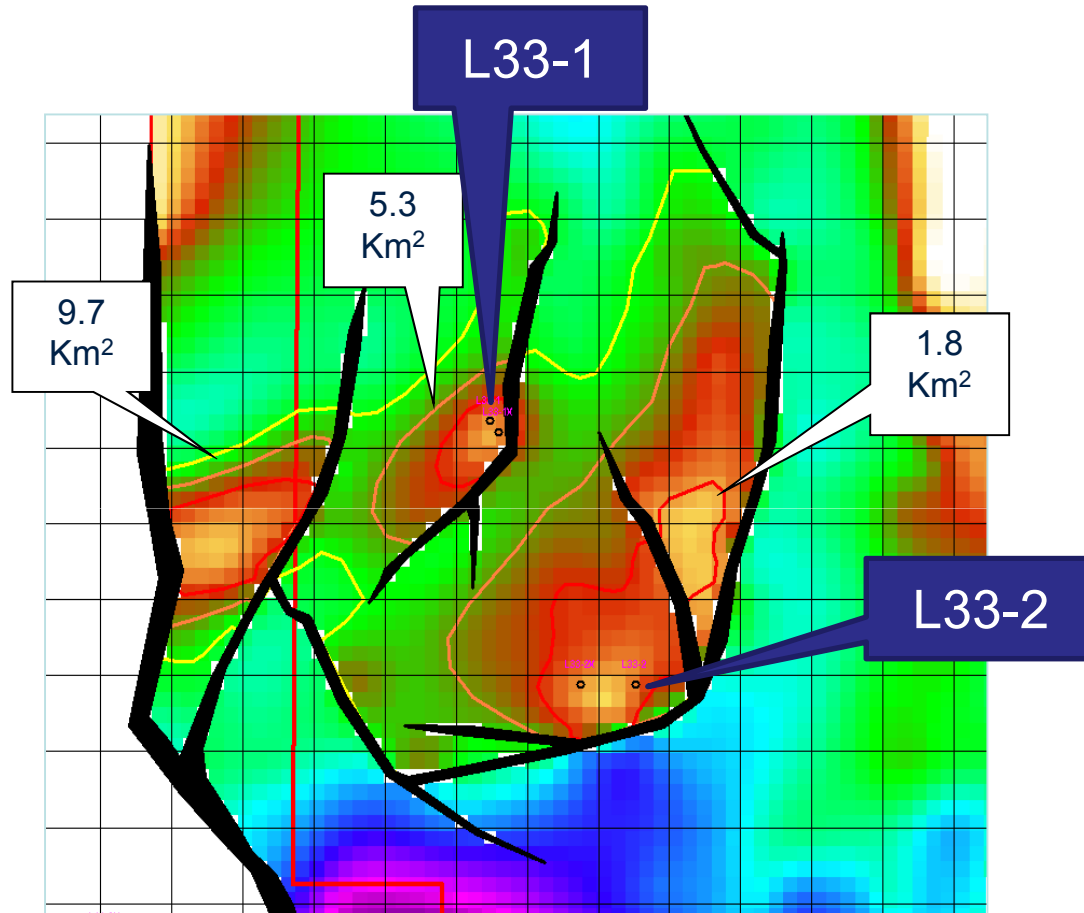
- L33-1 exploration well flow tested at 1,100 bopd gross
- L33-2 appraisal well flow tested at 2,370 bopd gross
- Application for Production Licence being prepared with production expected to commence ~ Jan to Feb 2011
- Further infield appraisal wells being planned and considering 3D seismic to better assess geology

L44/43

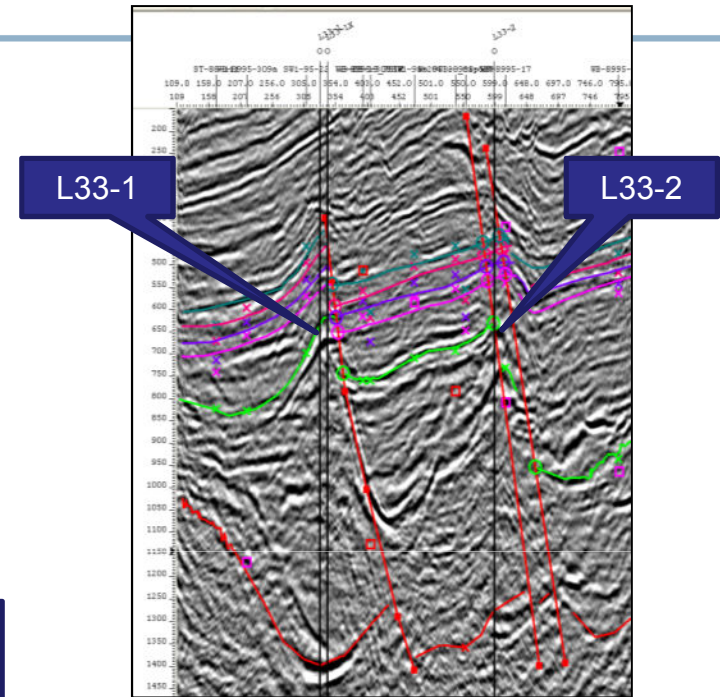
- WBEXT-1 exploration well flow tested at 3,500 bopd gross & on long term production test



THAILAND - L33-1 Discovery



L33-1 – black oil 35 API
 L33-2 - yellow oil 38 API

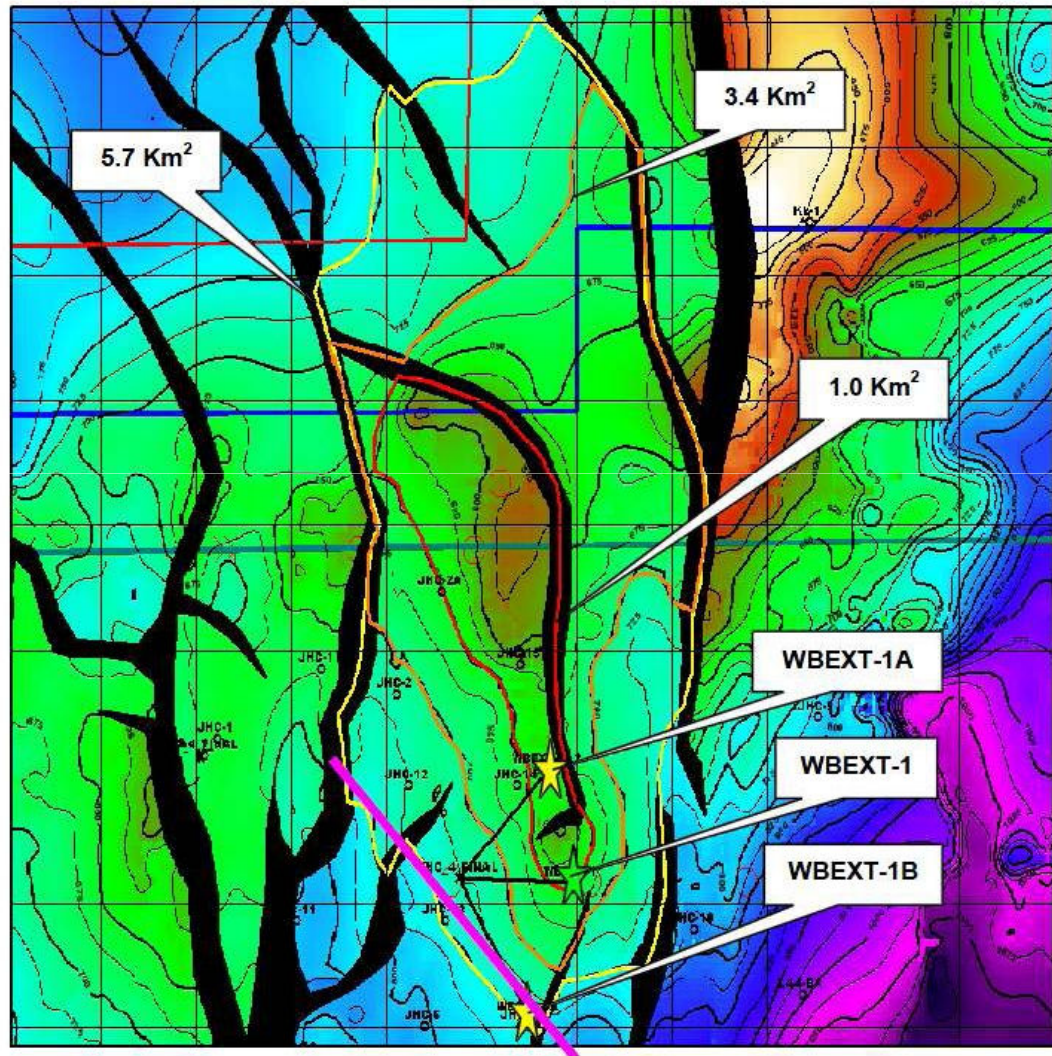


NEW DISCOVERY

L33-1 tested 1,100 bopd
 L33-2 tested 2,350 bopd
 Depth ~ 700 metres
 Awaiting prodn. licence

Combined 3,450 bopd awaits grant of production licence

THAILAND - WB Extension



WBEXT-1

Currently on test @ 3,500 bopd

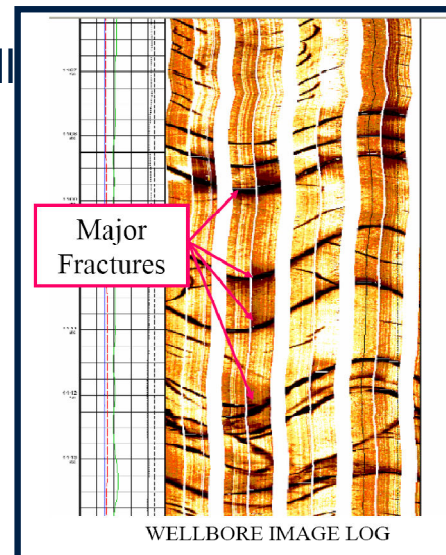
Fractured volcanics

Depth ~ 770 metres

WBEXT-1 on 90 day production test

THAILAND - Fractured Reservoirs

- L33, L44 & SW1A contain multi layered oil filled fractured reservoirs
- Massive lost circulation – no returns over reservoirs
- Heterogeneous nature of fracturing means individual well performance varies:
 - 100,000 bbls to 1.5 million bbls per well
 - Potential for infill locations
- Fracturing also results in varying water cut



DEPTHS

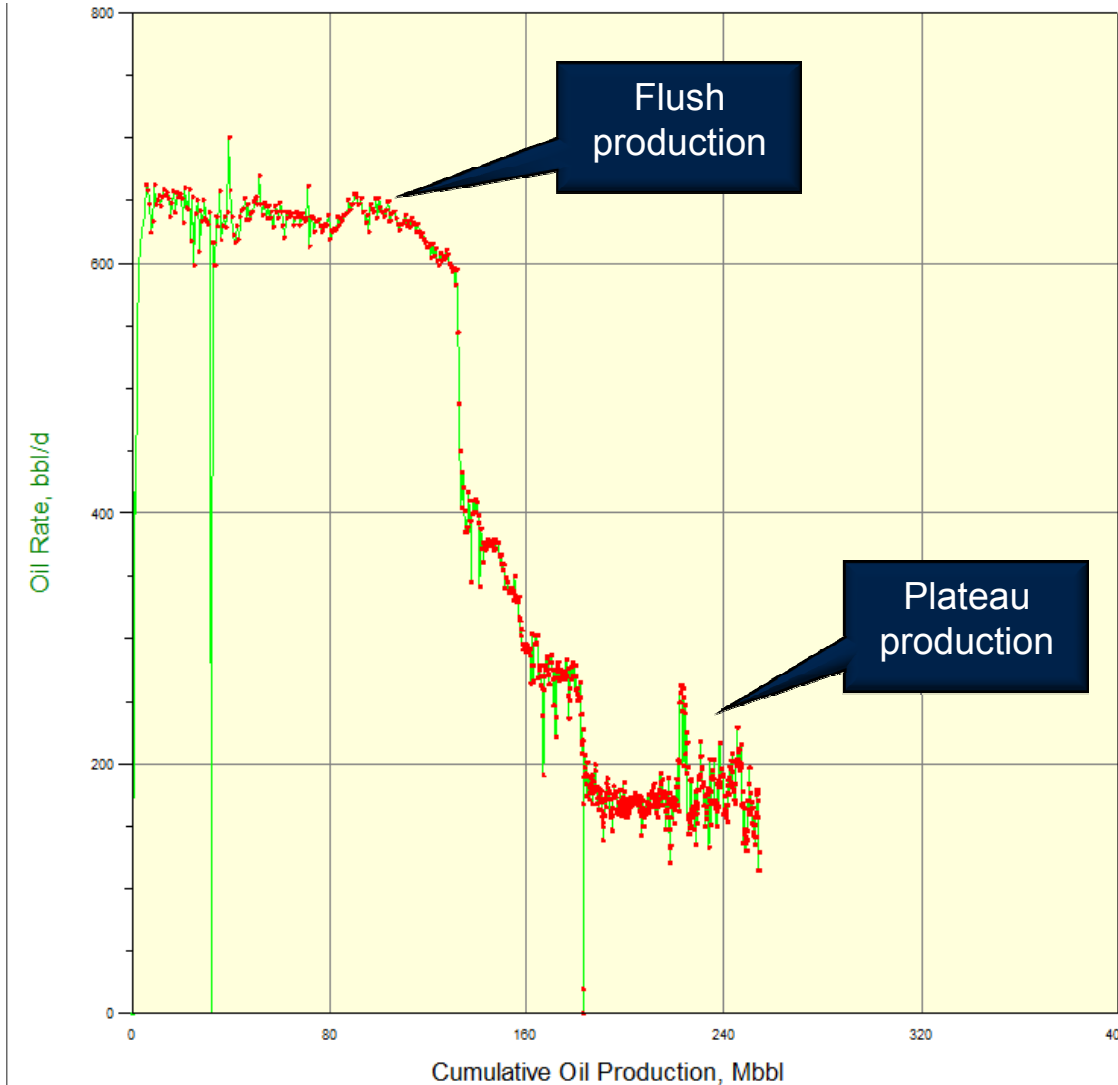
Bo Rang ~ 250 - 450m

L44-W ~ 550 – 650 m

NSE main ~ 700 – 950 m

NSE Deep ~ 1000m +

THAILAND – Average Well Performance



All wells perform differently

Typically initial flush production

Decline after oil extracted from major fractures

Plateau production at lower level

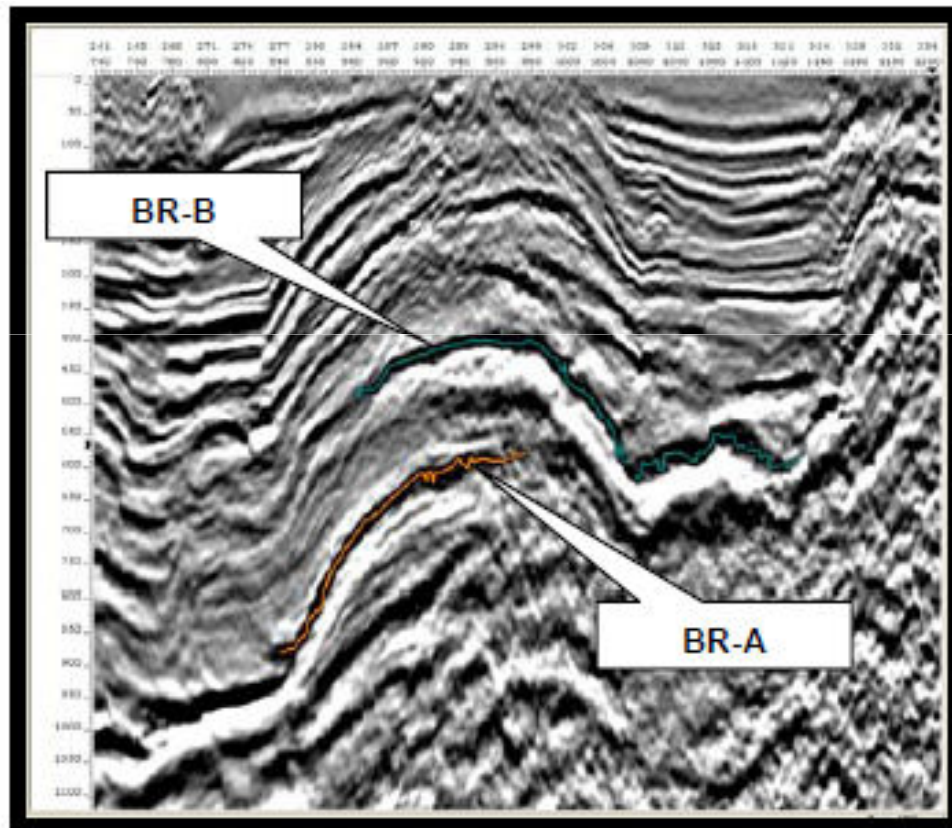
Plots as TYPE 1 or TYPE 2 fractured reservoir (after Nelson 2000)

Min or/nil matrix porosity

Dominant fracture porosity – difficult to predict fracture distribution

Varying production profiles for wells

THAILAND - Bo Rang Structure



Volcanic intrusions at multiple levels - eg. production from Bo Rang A & Bo Rang B

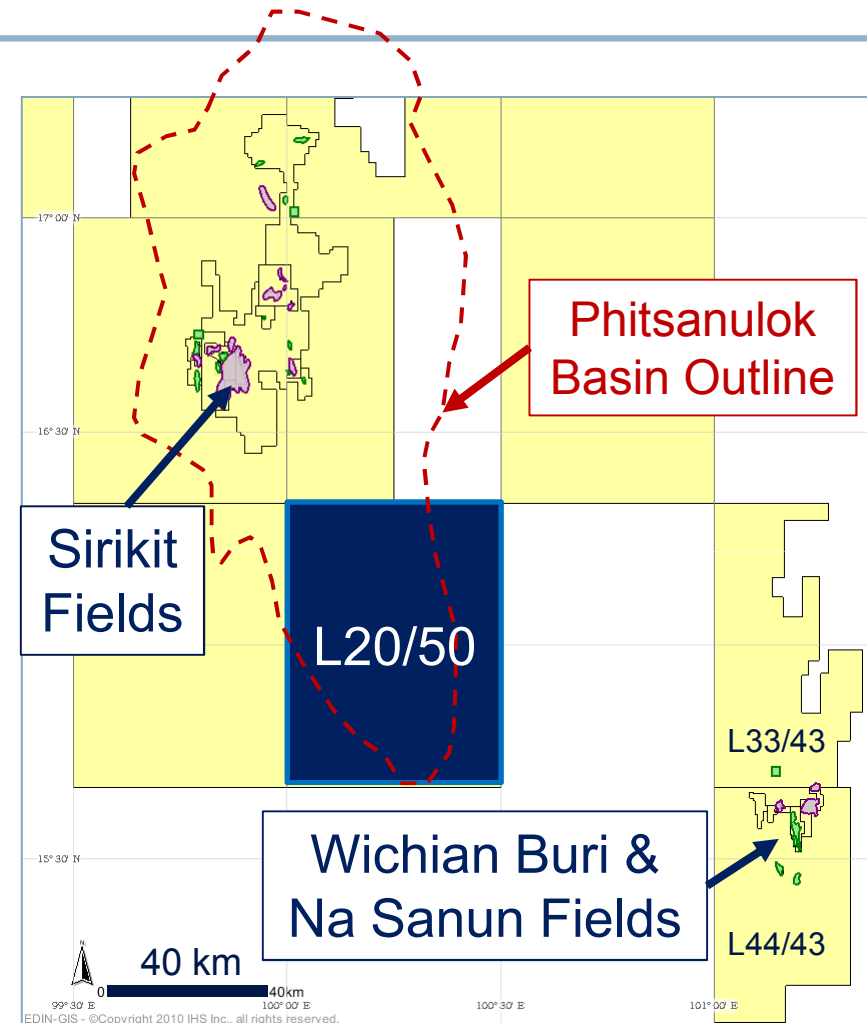
Extent of volcanics mapped on seismic

But difficult to predict fracture distribution

Evaluating methods to improve successful intersections

THAILAND - L20/50

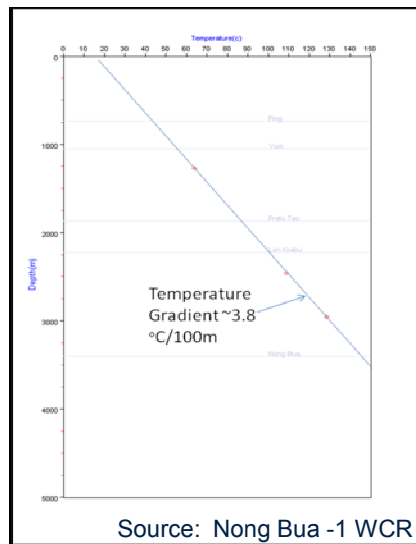
- On trend with 200 mmbbl Sirikit Oil Field (now producing ~20,000 bopd)
- Acquired 550 km new 2D seismic data
- Three drillable prospects identified
- Official written approval received for the Environmental Impact Assessment (“EIA”) submitted earlier this year for drilling onshore exploration concession L20/50
- Local permitting work is complete
- Drilling 1 firm and 2 contingent wells in Q4 2010 to Q1 2011



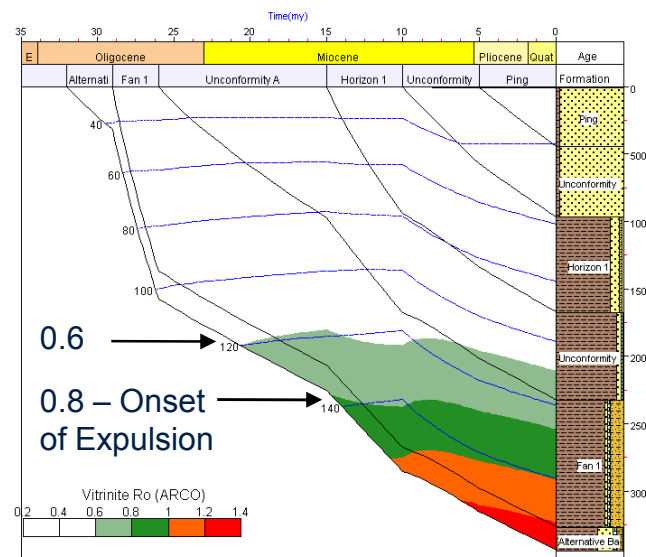
Carnarvon 50% & Operator

THAILAND - L20/50 Basin Modelling

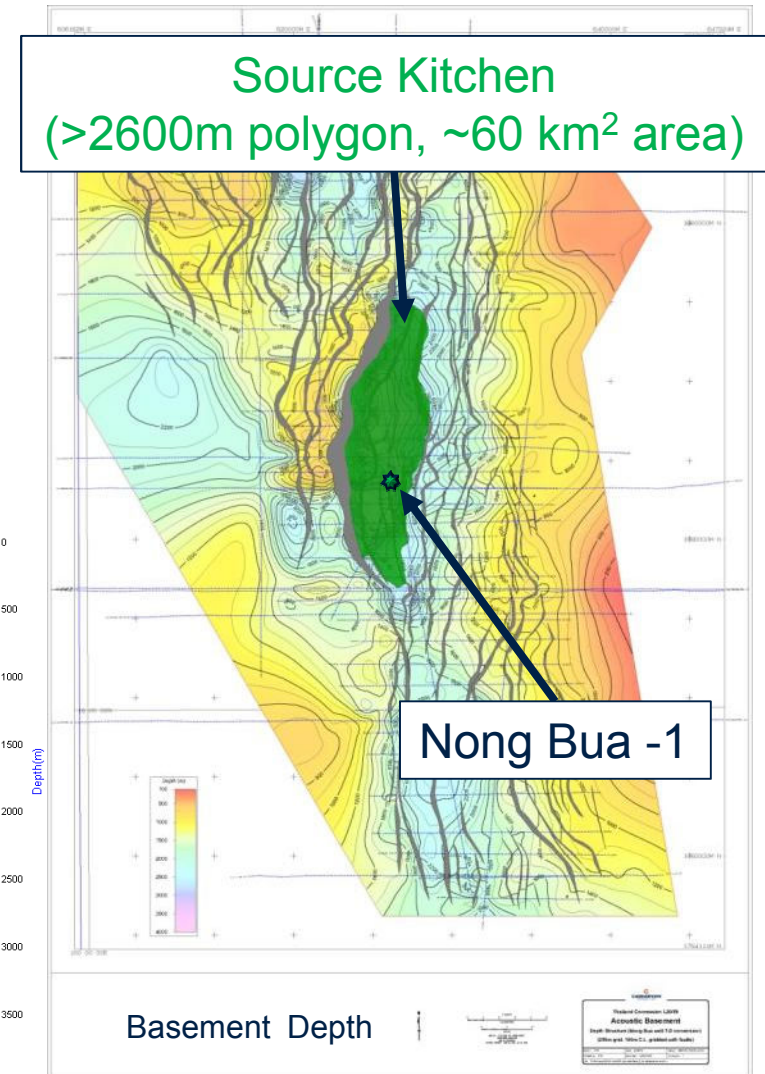
- New seismic defines deep basin in block
- Basin modelling indicates a source kitchen capable of generating hydrocarbons (supported by oil shows and geochemistry for Nong Bua – 1)



Thermal Gradient

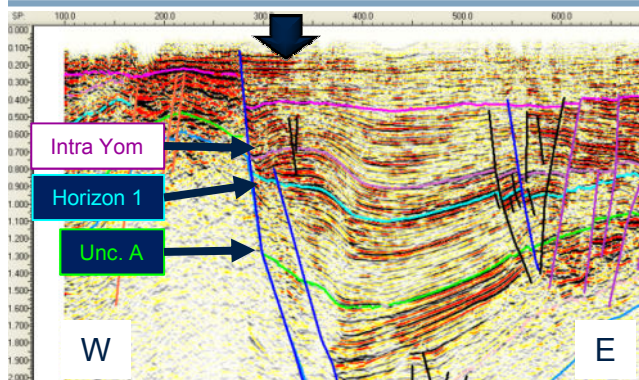


Nong Bua -1 Burial History

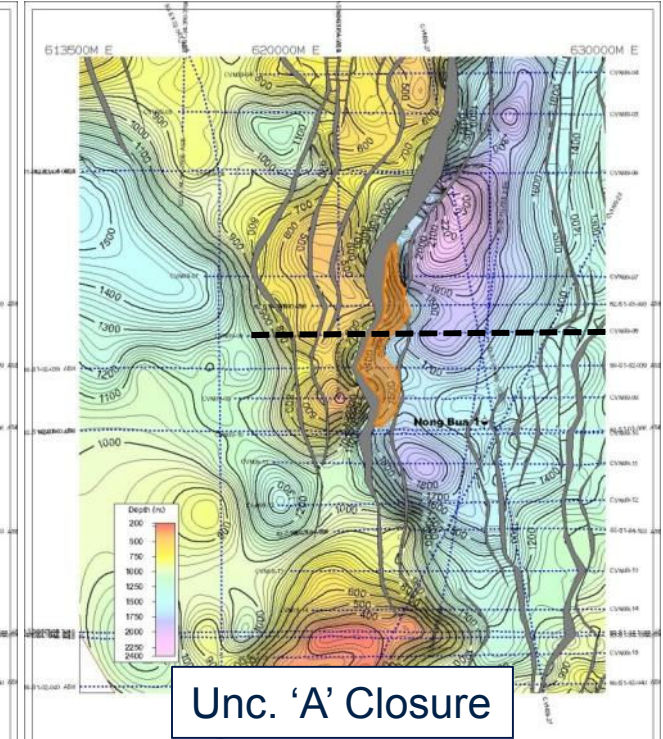
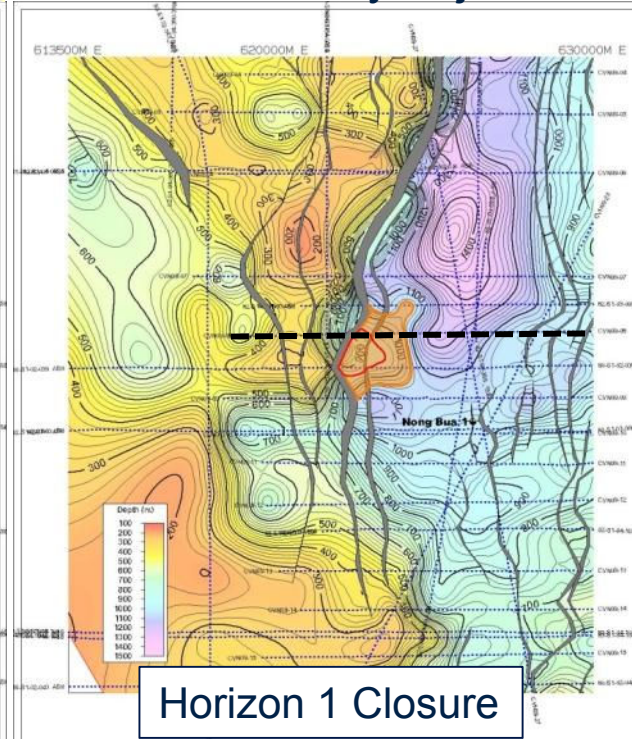
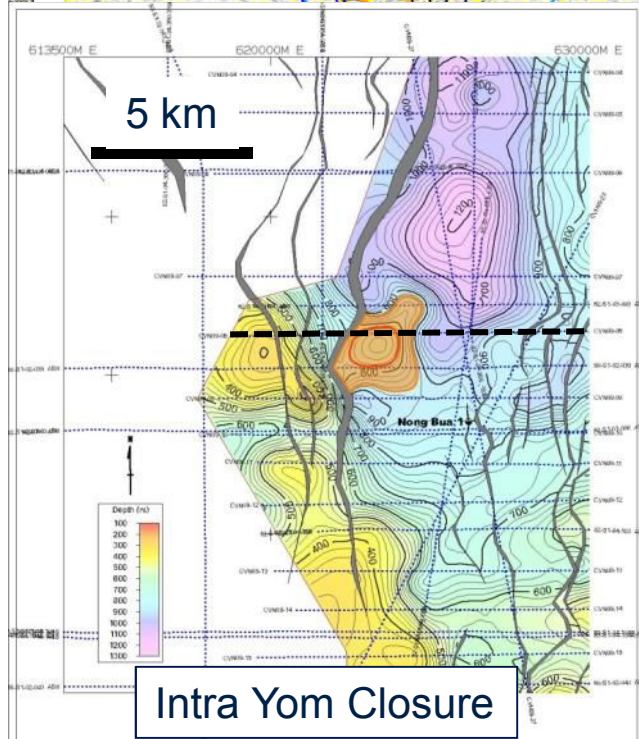


Large source kitchen in the block

THAILAND - L20/50 Tapao Kaew Prospect

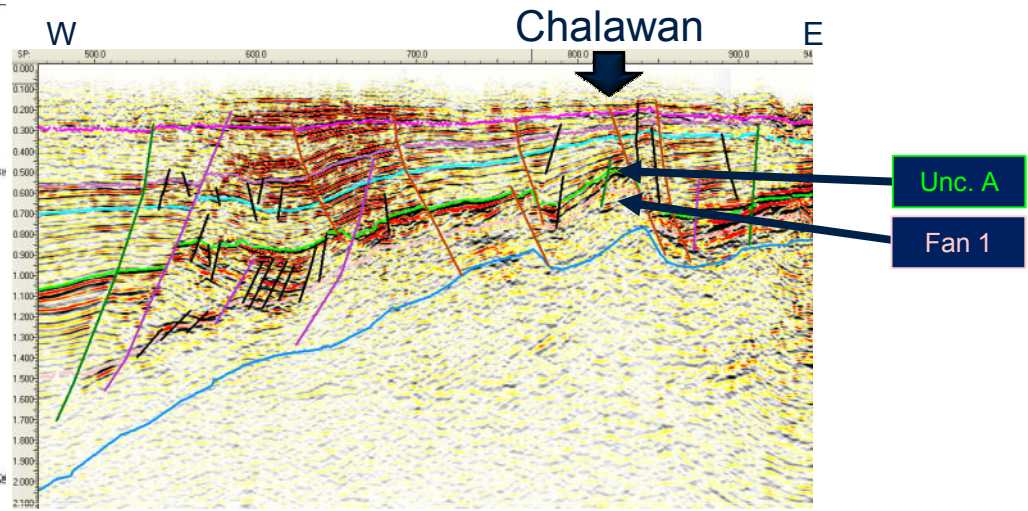
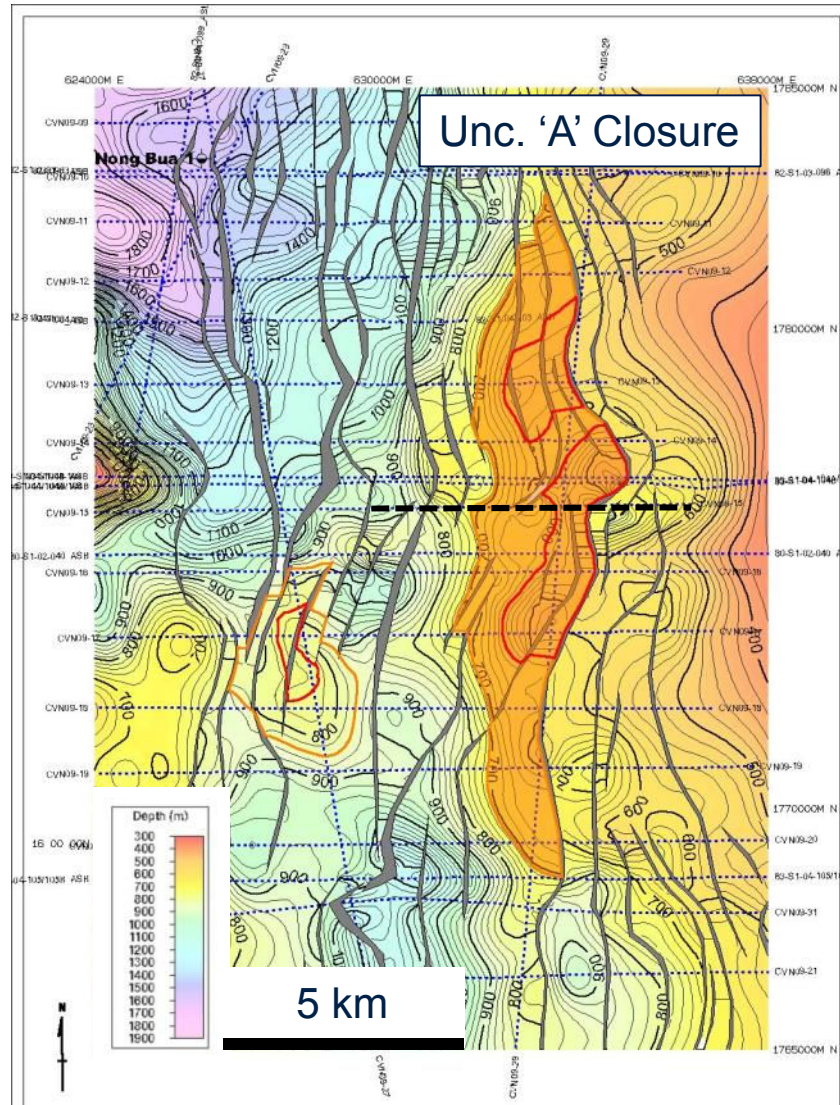


- Stacked, hanging-wall anticline closures
- 4-way dip at Intra Yom Fm level
- Faulted 3-way buttress at Hor.1 and Unc. A levels
- Potential **21 MMbbls** Pmean recoverable oil
- Immediately adjacent to kitchen; TD 1,715 metres



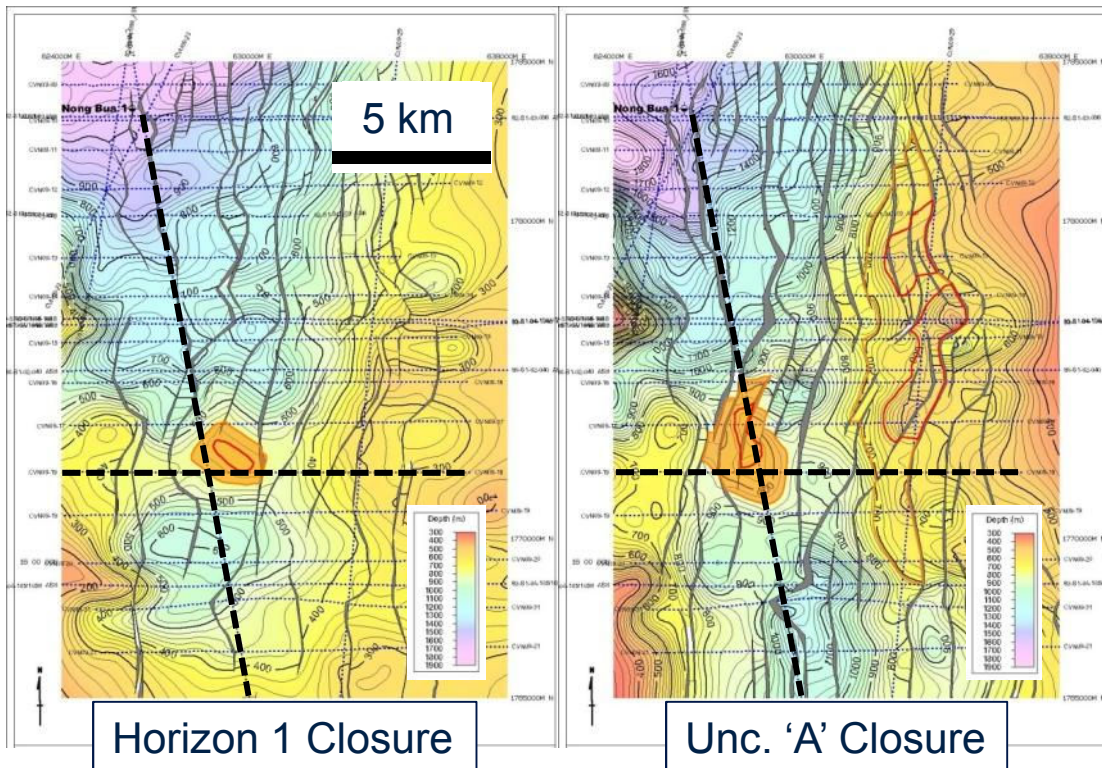
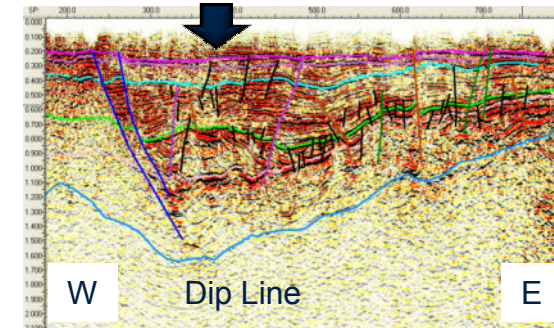
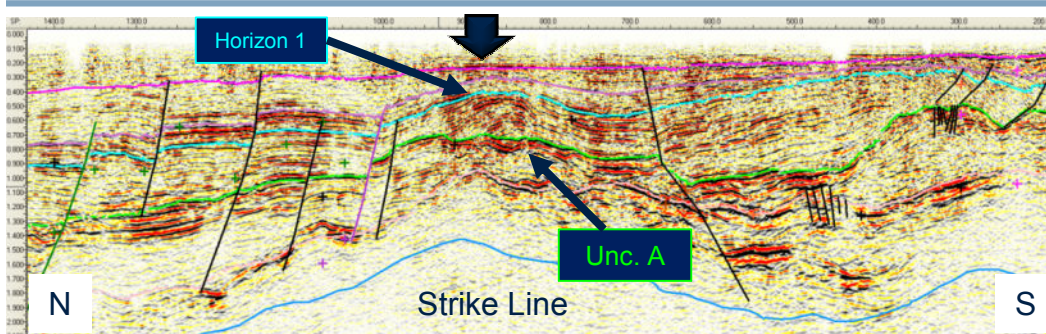
Tapao Kaew Prospect – 21 mmbbls potential

THAILAND - L20/50 Chalawan Prospect



- Tilted fault blocks with 3-way dip closure at Unc. 'A' and Fan 1 levels
- Lacustrine delta prograding westward
- Potential **35 MMbbls** P_{mean} recoverable oil (one reservoir level)
- Directly updip from kitchen; TD 995 m

THAILAND - L20/50 Krai Thong Prospect



- Stacked, mounded fan-deltas
- 4-way dip at Hor. 1 level (lacustrine delta prograding northward)
- Faulted 4-way at both Unc. A and Fan 1 levels (alluvial fans, input from both east and west)
- Potential **25 MMbbls** Pmean recoverable oil at three levels;
- TD 1,400 metres

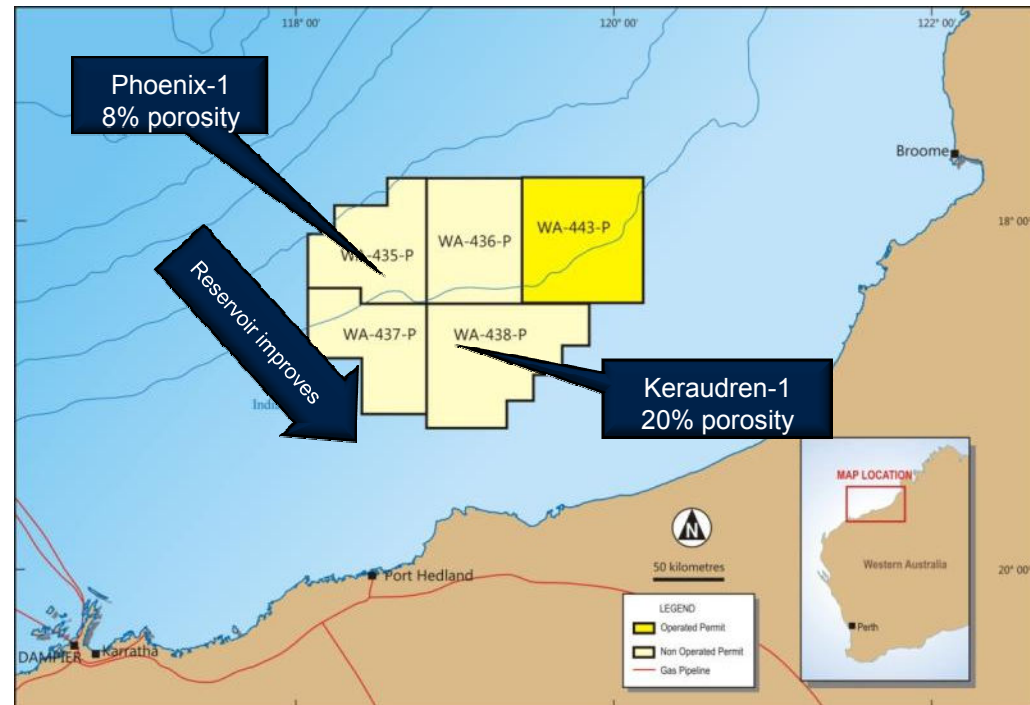
Krai Thong Prospect – 23 mmbbls potential

AUSTRALIA - Phoenix Gas Permits

- Large 28,300 km² area
- Shallow water ~ 100 metres
- Close (~150kms) to shore, pipelines & infrastructure
- Phoenix-1 gas discovered in 1988
- Low porosity mid-Triassic reservoirs at depth ~ 3,500 metres
- Potential for several Tcf of gas if successful appraisal

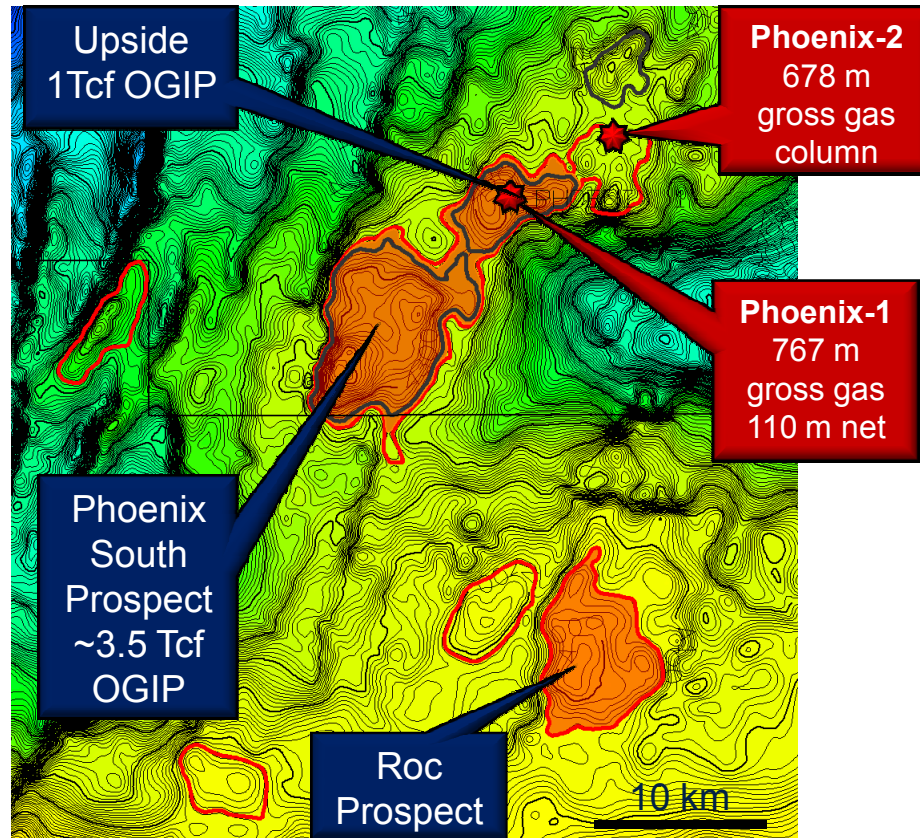
WA-435-P, WA-436-P, WA-437-P, WA-438P
CVN 50%, Finder 50% (Operator)

WA-443-P
CVN 100% & Operator

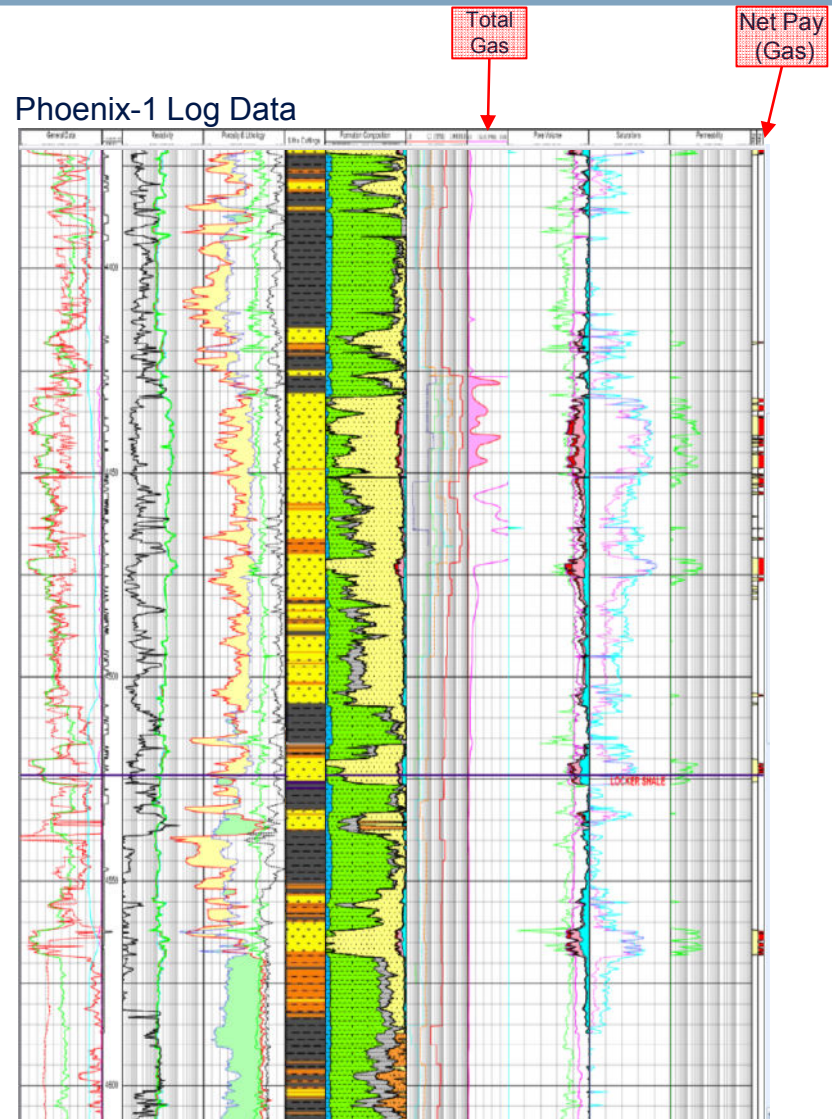


AUSTRALIA - Phoenix Gas Discovery

Depth Structure Map of Near Mid Triassic Gas Sand Level



Phoenix-1 Log Data



Numerous structures – needs 3D seismic

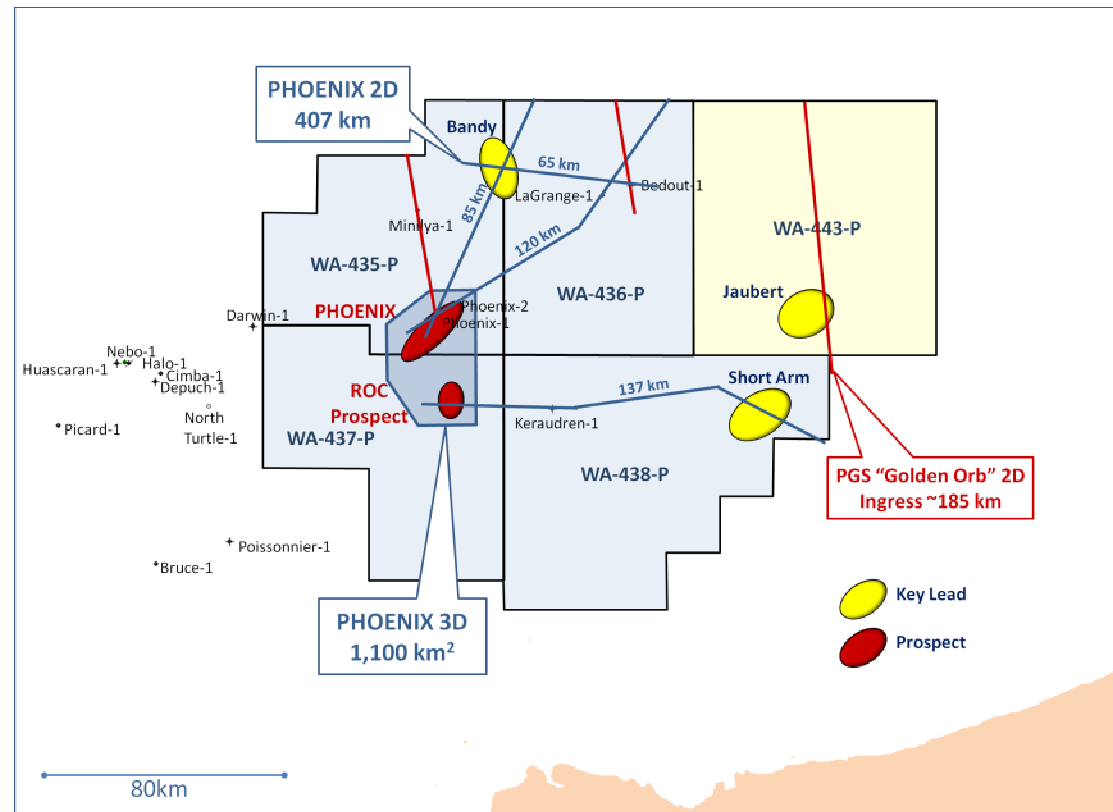
Petrophysics indicates 110 m net gas pay in Phoenix-1

AUSTRALIA - Phoenix Data Acquisition

Accelerated Year 1 work fulfils all firm 3 year commitments

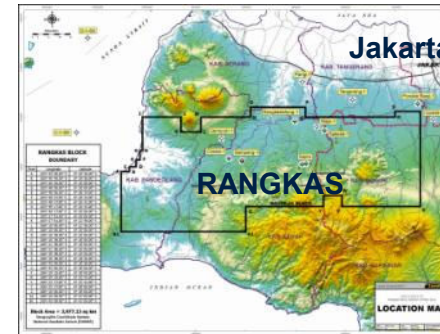
- New seismic in Q3/Q4 2010
 - 407 km regional 2D and
 - 1,100 km² detailed 3D over Phoenix trend
- New aeromagnetic data acquired (15,847 km²) in Q2/2010
- 2010 budget of A\$3 million net to Carnarvon

Year 1 data acquisition underway

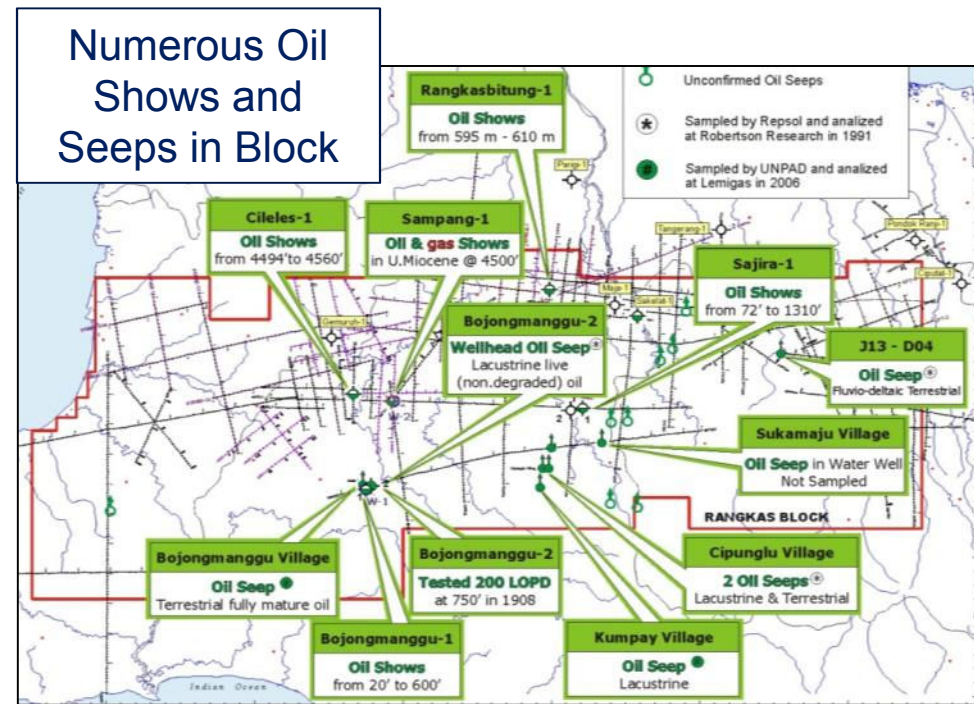


INDONESIA - Rankas PSC

- Carnarvon farmed into the permit in September 2009
- Large permit located onshore West Java, close to Jakarta
 - Previous wells (last in 1991) targeted shallow Neogene carbonates; deeper Paleogene clastic play is untested
 - Direct evidence of live oil from seeps and previous exploration in block
 - Pertamina discoveries (2007-2010) in nearby West Java block tested from 80-3000 bopd and 3.5-15 MMscfg/d from fractured basement play
 - Gas discoveries can be commercialised
- Drilling anticipated 2011 / 2012



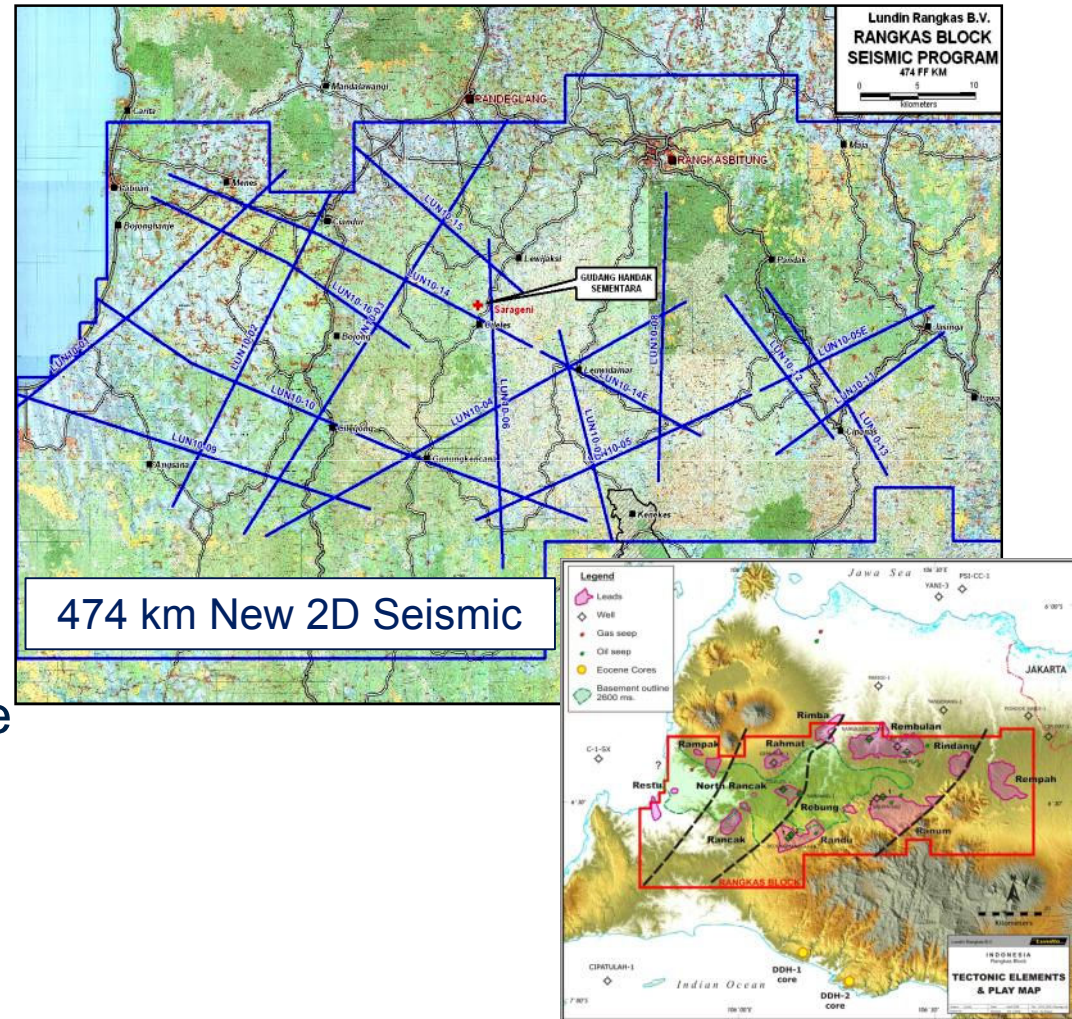
Carnarvon 25%
Lundin Petroleum Operator



Rangkas PSC has significant oil potential with Jakarta market nearby

INDONESIA - Rangkas PSC Seismic

- Acquisition of 474 km of **2D** seismic data scheduled for September 2010
- Over 12 significant leads to refine with new data
- Environmental baseline study complete
- Reprocessing of 1000 km of existing 2D data complete
- Core/reservoir study complete
- Petrophysics and basin modelling studies underway



New seismic data in 2010 to mature drillable oil prospects

Forward Programme next 6 months

THAILAND

▪ L44/43 –

Up to 12 appraisal/development wells

- WBEXT
- Bo Rang A & B
- NSE-F1
- Si Thep



L33/43 & L44/43
Actual programme
dependent on
ongoing results

▪ L33/43 –

Further development wells L33-1 & L33-2

▪ L20/50 -

Drill 1 firm + 2 contingent wells – Carnarvon operator

▪ L52/50 & L53/50 –

Planning for new seismic

AUSTRALIA

▪ Phoenix Blocks -

Acquire 1,100km² new 3D & 407km 2D seismic

▪ WA-399-P –

Acquire new 3D seismic over entire permit

INDONESIA

▪ Rangkas Block –

Acquire new 474 kms² 2D seismic

NEW ZEALAND

▪ PEP 38524

Evaluate remaining prospectivity

Up to 15 wells over next 6 months

Good Oil Conference 2010

Ted Jacobson



**Come and join
us for a free
coffee at booth 40!**