

Investor Presentation May 2008



CARNARVON
PETROLEUM LTD



Disclaimer

This presentation contains forward looking statements which involve subjective judgement and analysis and are subject to significant uncertainties, risks and contingencies including those risk factors associated with the oil and gas industry, many of which are outside the control of and may be unknown to Carnarvon Petroleum Ltd.

No representation, warranty or assurance, express or implied, is given or made in relation to any forward looking statement. In particular, no representation, warranty or assumption, express or implied, is given in relation to any underlying assumption or that any forward looking statement will be achieved. Actual and future events may vary materially from the forward looking statements and the assumptions on which the forward looking statements were based.

Given these uncertainties, readers are cautioned not to place undue reliance on such forward looking statements, and should rely on their own independent enquiries, investigations and advice regarding information contained in this presentation. Any reliance by a reader on the information contained in this presentation is wholly at the readers own risk.

Carnarvon and its related bodies corporate and affiliates and their respective directors, partners, employees, agents and advisors disclaim any liability for any direct, indirect or consequential loss or damages suffered by a person or persons as a result of relying on any statement in, or omission from, this presentation.

Subject to any continuing obligations under applicable law or any relevant listing rules of the ASX, Carnarvon disclaims any obligation or undertaking to disseminate any updates or revisions to any forward looking statements in this presentation to reflect any change in expectations in relation to any forward looking statements or any such change in events, conditions or circumstances on which any such statements were based.



Investment Highlights

- **Rapidly growing Thailand oil production**
 - **Currently 3,000 bopd net sales, an increase of 1,000% over last 12 months**
 - **Targeting 6,000 bopd net sales by end 2008**
- **Rapidly growing Thailand oil reserves**
 - **11.4mmbo 2P net reserves - increase of over 300% over the last 12 months**
 - **45.7mmbo 3P net reserves**
- **2 rigs contracted and currently operating in Thailand by Joint Venture**
 - **16 wells targeted for remainder 2008**
- **2008 drill programme targeting a mix of development, appraisal and exploration wells to ensure continued strong production and reserve growth**
- **Proven management supported by a strong technical team with a track record of delivering shareholder value**
- **\$23 million net cash at end of March 2008, debt and oil hedge free and strong, growing cashflow to underpin new business opportunities**
- **Reviewing new venture projects to ensure strong project pipeline and further upside opportunities**



Corporate Snapshot

Capital Structure

Ordinary Shares	672 million
Options (ex @ 10c)	11 million
Fully Diluted Market Cap @ 60c	\$403 million
Cash on hand	\$23 million (31 March 08)
Debt	Nil
Top 20	30%
Directors and Management	17.5%

Directors and Management

Non Executive Chairman: Peter Leonhardt (FCA)

- Chartered Accountant (previous Managing Partner of Coopers and Lybrand, Perth)

Managing Director: Ted Jacobson (Geologist/Geophysicist)

- 37 yrs oil experience, co-founder of Discovery Petroleum, co-founder and former technical director of Tap Oil

Non Exec Directors: Neil Fearis (Lawyer) & Ken Judge (International Director)

Company Secretary & CFO: Bob Anderson (CA)

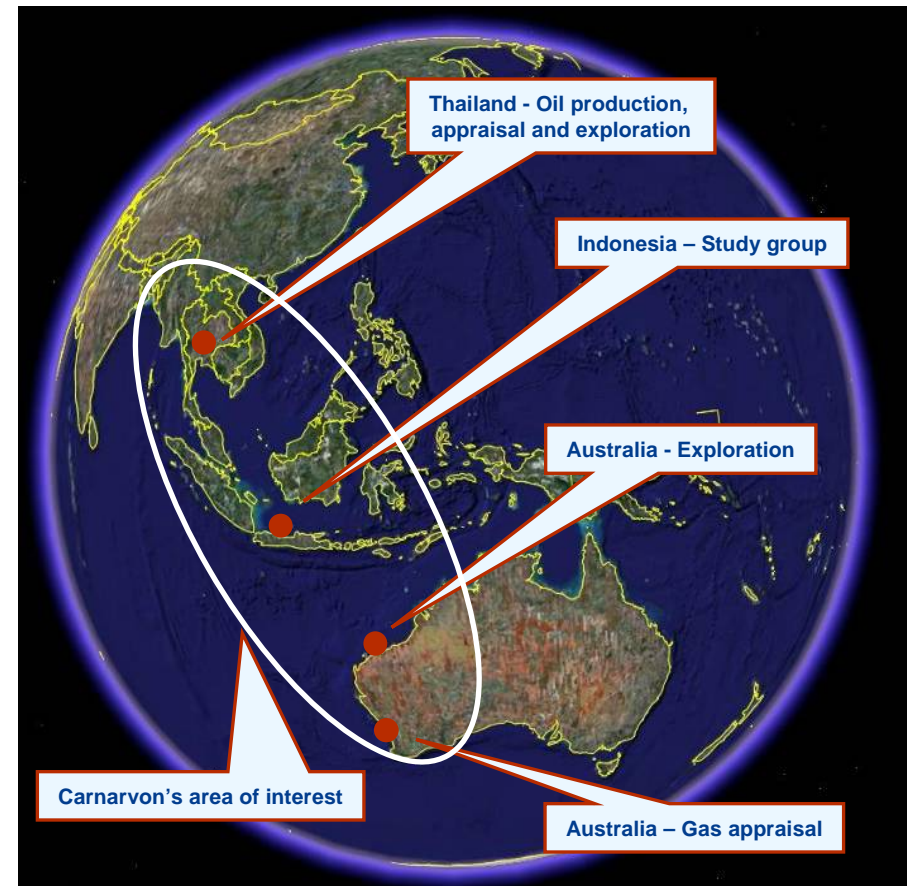
COO: Philip Huizenga (Petroleum Engineer)





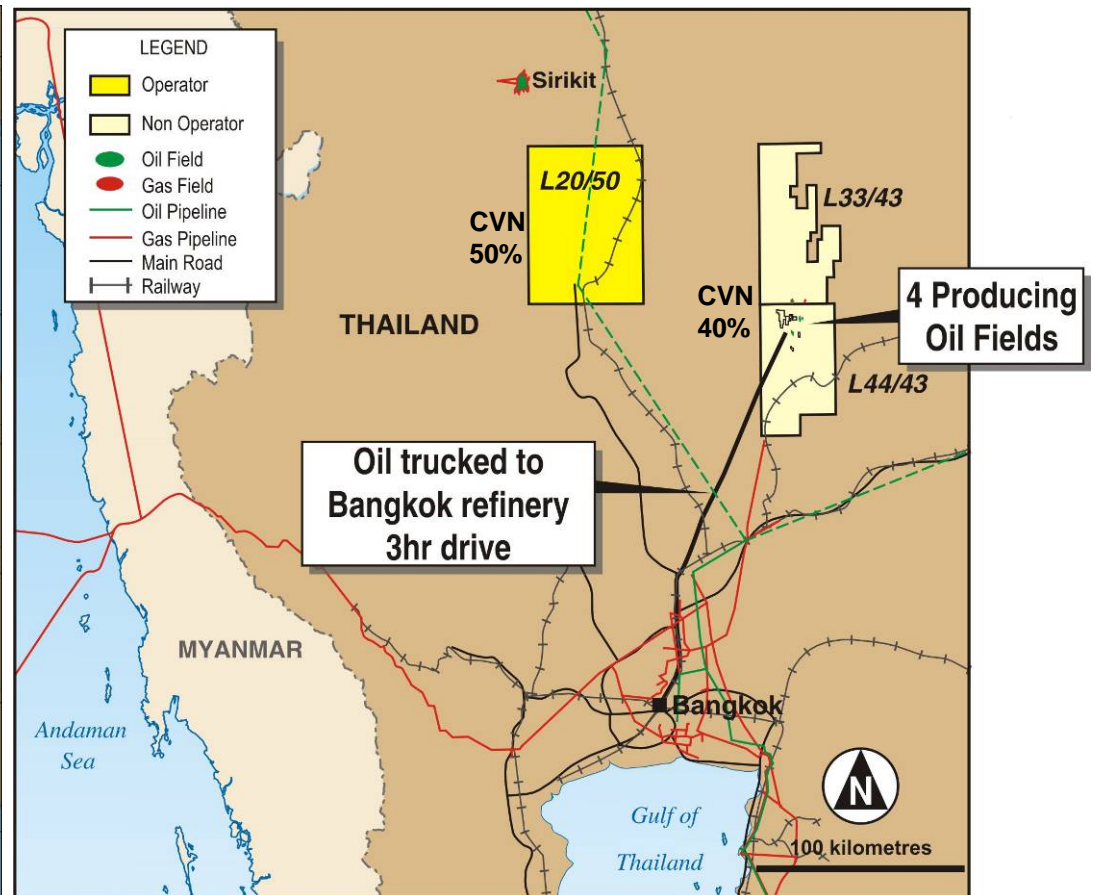
Project Areas

- Focus on Thailand production, development and appraisal with significant exploration upside
- Recent awards and applications for new permits in Thailand provide additional exploration upside
- Exploration opportunities in Australia and South East Asia
- Seeking further project and new business opportunities in the Indian Ocean Rim





Thailand





Thailand Oil Industry

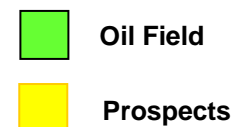
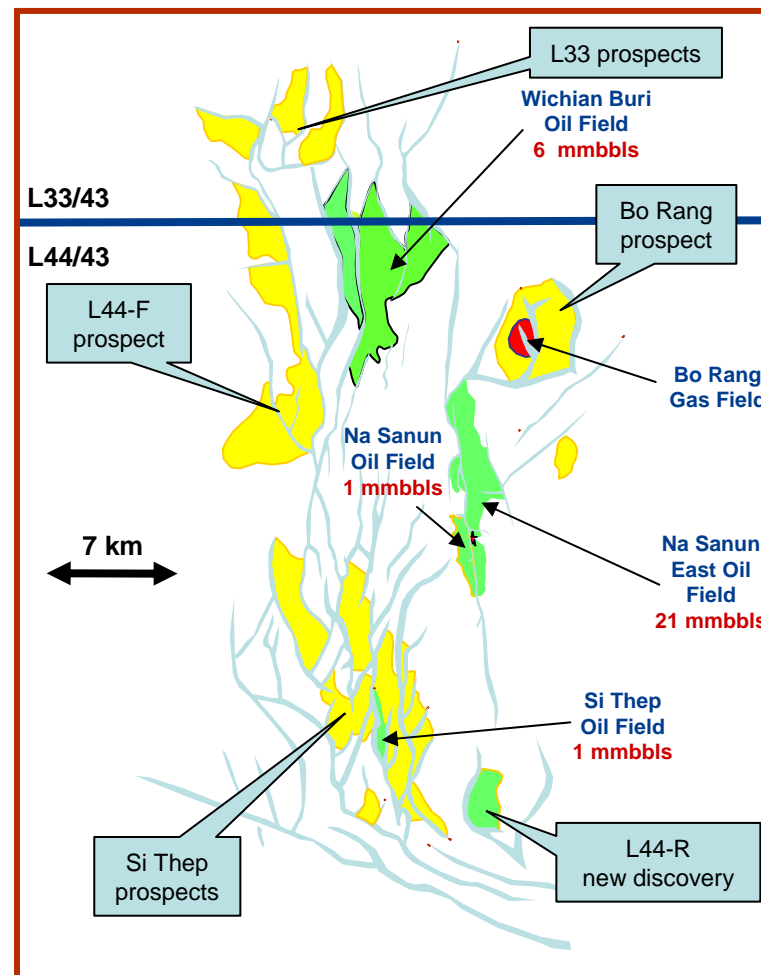
- Net importer of ~600,000 bopd
- New Thai Government goal to substantially increase oil production from 200,000 to 250,000 bopd by 2011
- Five oil refineries with a combined capacity of ~700,000 bopd.
- Carnarvon is fast becoming a significant Thai oil producer and is building its presence in the region





L33/43 & L44/43 - Overview

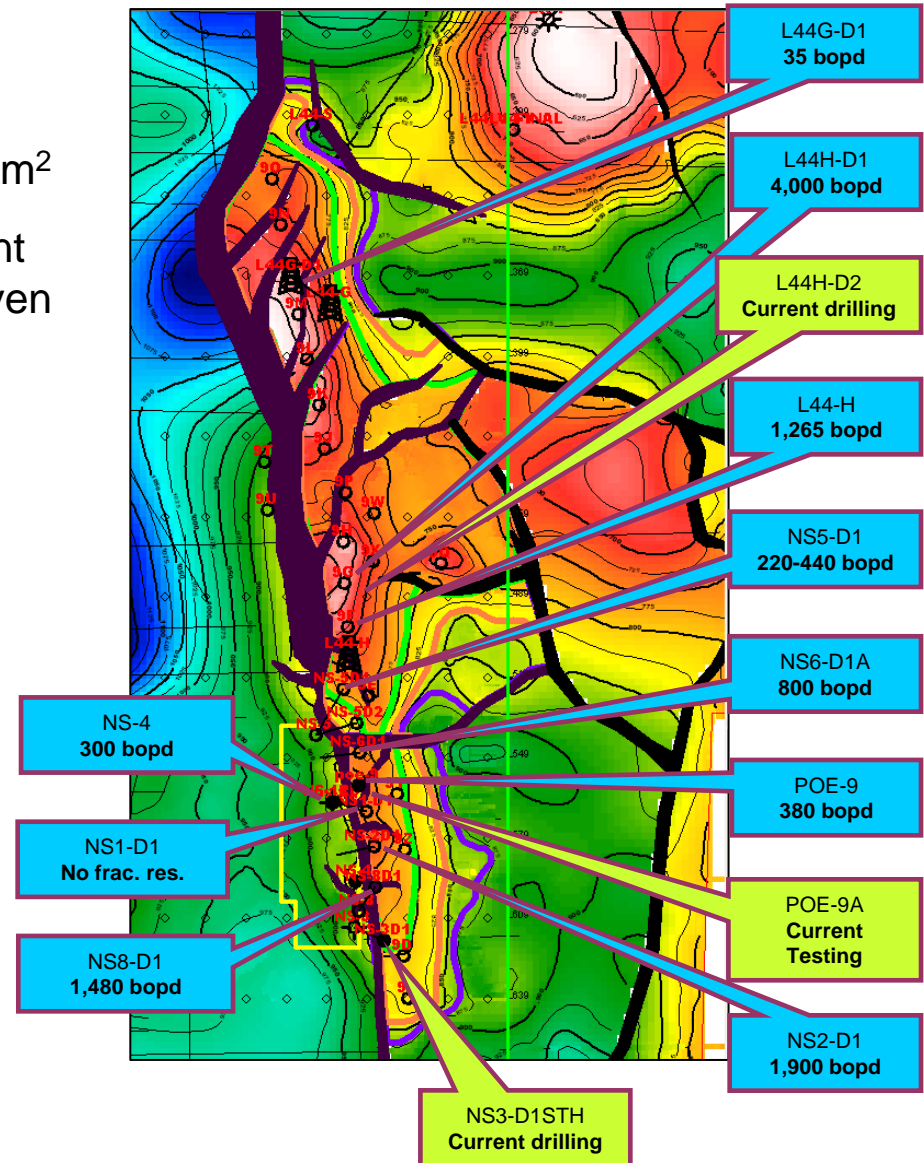
- Carnarvon 40% - Pan Orient (TSX) 60% and operator
- 2 rigs contracted and operating
- Significant production and growing rapidly
- Significant reserves and growing rapidly
- Targeting 16 wells for remainder 2008
- Development, appraisal and exploration wells to be drilled over a number of project areas to increase production and reserves
- Excellent infrastructure in place
- Many large prospects with significant oil potential
- Some prospects have old wells with fractured volcanics not tested





L33/43 & L44/43 - Production

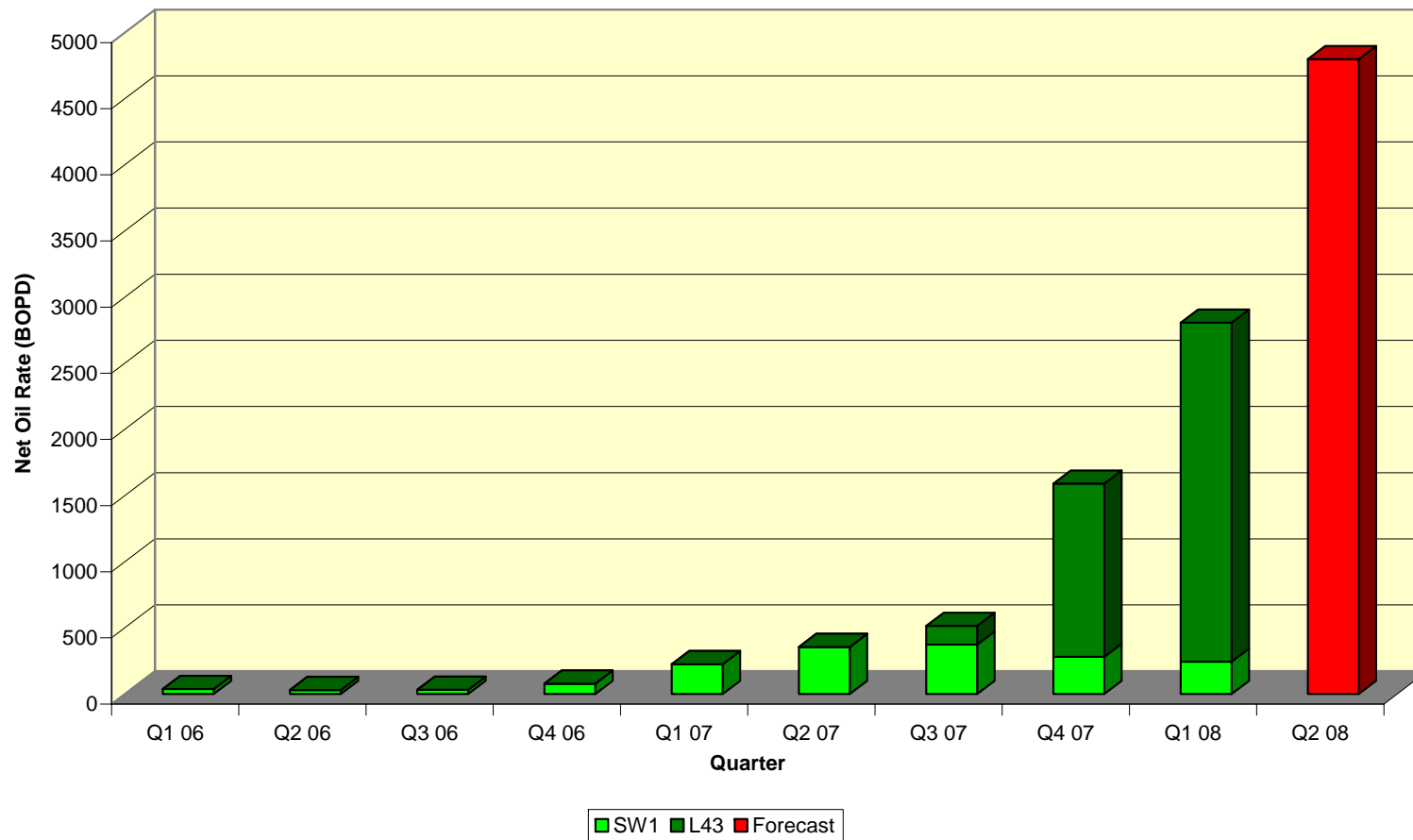
- Na Sanun East comprises of three separate compartments upthrown on east of bounding fault, each with proven production – total 16.5km²
- Na Sanun comprises a single fault compartment downthrown to west of bounding fault with proven production
- Reservoir comprises fractured volcanic with matrix porosity
 - Matrix porosity 7% - 13%
 - Recovery factor 10% - 30%
 - Substantial reservoir study in progress
- Flow rates depend on degree of fracturing & well bore exposed
 - L44H-D1 is highest producing onshore well in Thailand ~ 4,000 bopd on test





L33/43 & L44/43 - Production

Quarterly Production BOPD (Net)



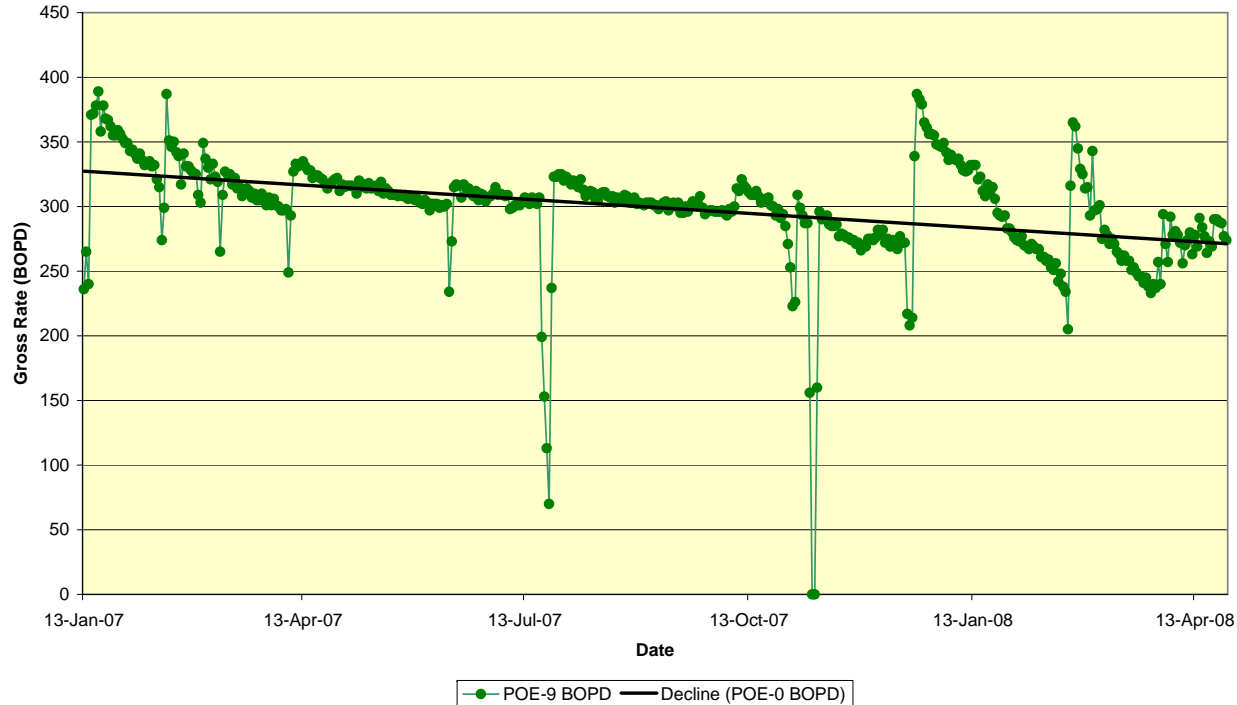
- Well deliverability of ~4,000 bopd net Carnarvon and growing
- Current production of ~3,000 bopd net Carnarvon and growing
- Targeting 4,500 bopd sales by June 2008



L33/43 & L44/43 - Production

- Discovery well POE-9 gives longest production history – 15 months
- Some early decline as oil produced from fractures
- Longer term lower decline indicates production from matrix
- Minimal overall production decline (~12% p.a.) suggests possible long field life
- Production has not been impacted by other wells brought onto production

POE-9 Production Chart



Decline of around 15% over 15 months



L33/43 & L44/43 - Cashflow

Operating Cashflow

- Crude sale price ~85% of WTI
- Operating costs ~US\$5 per barrel plus US\$ 2.70 trucking costs

Capital

- Very good infrastructure in place with a multi lane highway running through permits
- Infrastructure capital required to increase sales to 8,000 bopd net Carnarvon is less than US\$5 million net

Drilling

- Two rigs under long term contract
- Approx US\$0.8mm per well, 20 days drilling
- Very fast payback (at average flow rates - between 1 week and 1 month)

Fiscal Regime

- Royalty tax - 5 – 15% sliding scale on monthly production levels (current ~8%)
- SRB tax - 0 -75% of profits once capital recovered
- Company tax - 50% on net profit after royalty and SRB
- Based on Gaffney Cline's report, company take equates to approx 30% future net revenue after taxes and costs



L33/43 & L44/43 - Reserves

- Reviewed as at 31 December 2007 by independent consulting firm Gaffney Cline & Associates Ltd
- Over 300% increase in 2P reserves over 2007
- Drilling programme of up to 16 development, appraisal and exploration wells likely to add further significant reserve increase in 2008

OIL FIELD	Proved	Proved + Probable	Proved + Probable + Possible	Reservoir type
	1P	2P	3P	
Na Sanun East	2.2	8.3	32.0	Fractured Volcanic
Na Sanun	0.1	0.3	1.0	Fractured Volcanic
Wichian Buri	0.3	2.5	9.8	Sandstone
Si Thep	0.1	0.2	3.0	Sandstone
Total Net Carnarvon	2.6 mmbbls	11.4 mmbbls	45.7 mmbbls	

Does not include recent oil discovery L44-R



L33/43 & L44/43 - Appraisal Upside

Na Sanun East Development

- Development Licence granted
- Environmental approvals granted
- Development drilling to commence shortly

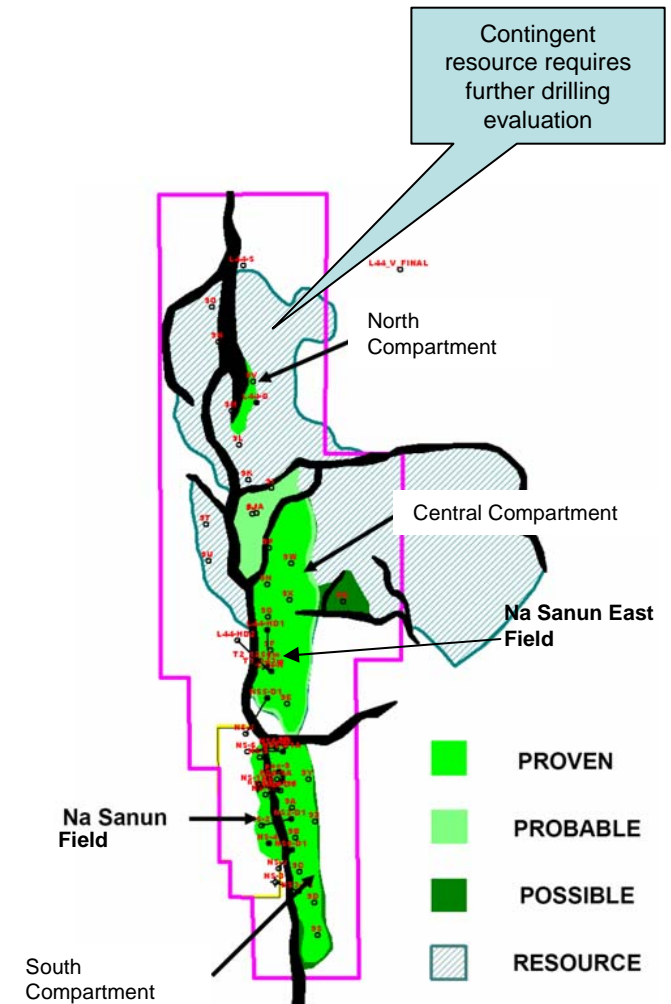
Na Sanun East Deeper Reservoirs

- Currently producing from only one of 4+ potential volcanic reservoirs – significant reserve and production upside exists
- This potential is currently being evaluated with POE-9A (currently testing) and L44H-D2 (currently drilling)

Na Sanun East Contingent Resource

- Contingent resource requires further drilling appraisal to be added to reserves

OIL FIELD	Low Case	Mid Case	High Case
	1C	2C	3C
Total Net Carnarvon	9 mmbbls	14 mmbbls	46 mmbbls





L33/43 & L44/43 - Appraisal Upside

Bo Rang

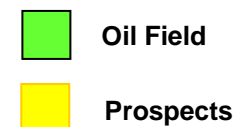
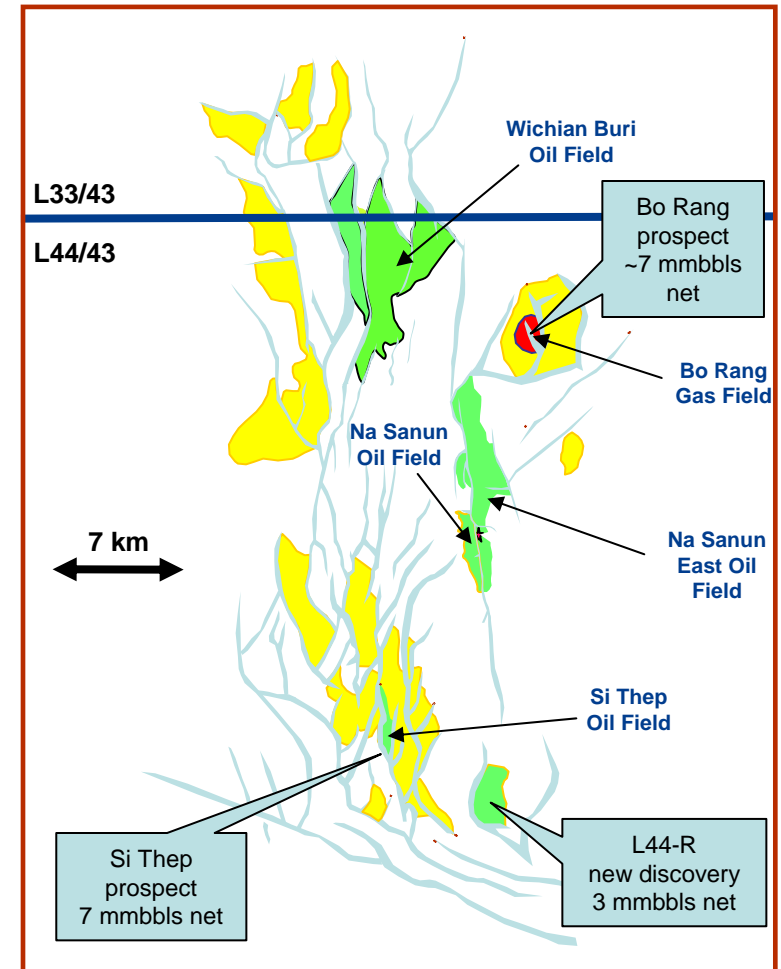
- Bo Rang-1 intersected 6 fractured volcanic zones – only upper zone tested
- Flowed gas @ 5.6 mmcf/d from upper volcanic interval
- Potential oil resource from only one deeper volcanic reservoir not previously tested of **7mmbbls (2C) net recoverable**

Si Thep

- Si Thep-1 intersected 4 fractured volcanic zones – not tested
- Currently producing from sandstone reservoir ~ 10 bopd
- Complex faulting possibly indicates good fractured reservoirs
- Potential oil resource estimate of **7 mmbbls (2C) net recoverable**

L44-R

- L44-R is a new volcanic reservoir discovery drilled by the Joint Venture in March 2008, 10 kms south and separate structure from Na Sanun – located on 2D seismic
- Flowed 29 bopd from volcanic reservoir
- New reserves additions yet to be determined
- Reservoir not fractured in wellbore – oil flow potentially from volcanic matrix
- Hopeful further wells may intersect fracturing
- Potential oil resource estimate of **3 mmbbls (2C) net recoverable**





L33/43 & L44/43 - Exploration Upside

Wichian Buri Deep

- WB Deep-1 targeted volcanics beneath Wichian Buri Oil Field
- WB Deep-1 flowed water at ~ 750 bwpd
- Indicates good fractured volcanic reservoir
- Well planned updip to look for oil in 2008/2009

L44-F

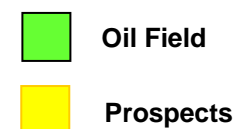
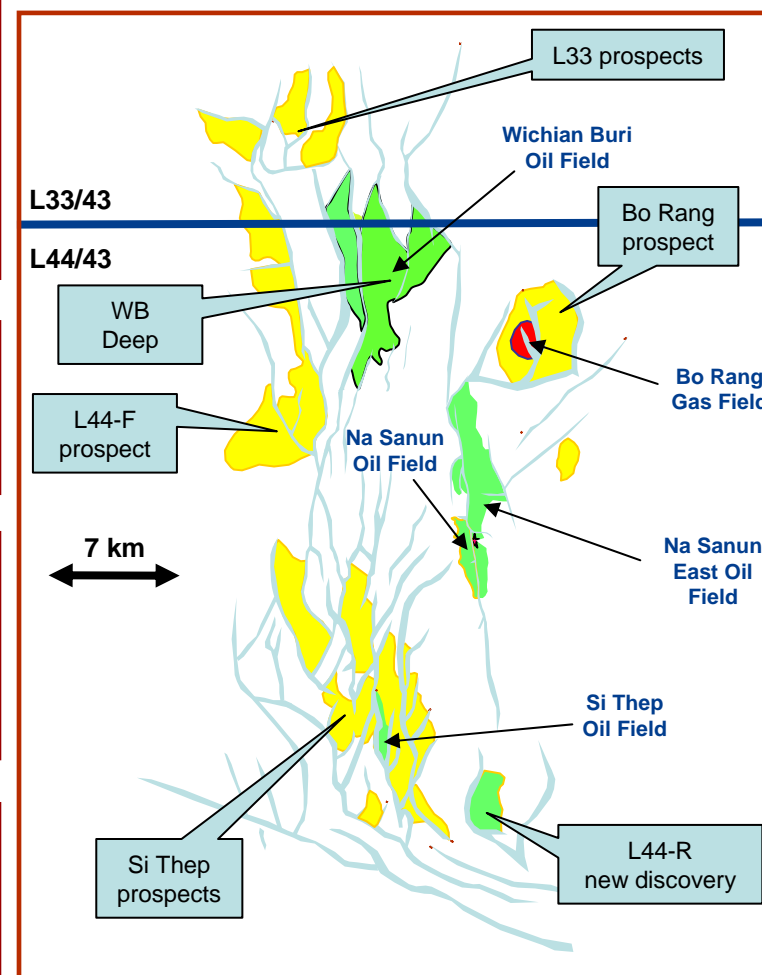
- Exploration potential
- Many structural compartments

L33/43

- Mapped on existing 2D seismic
- Several prospects mapped
- 3 wells planned for 2008

Well Planning

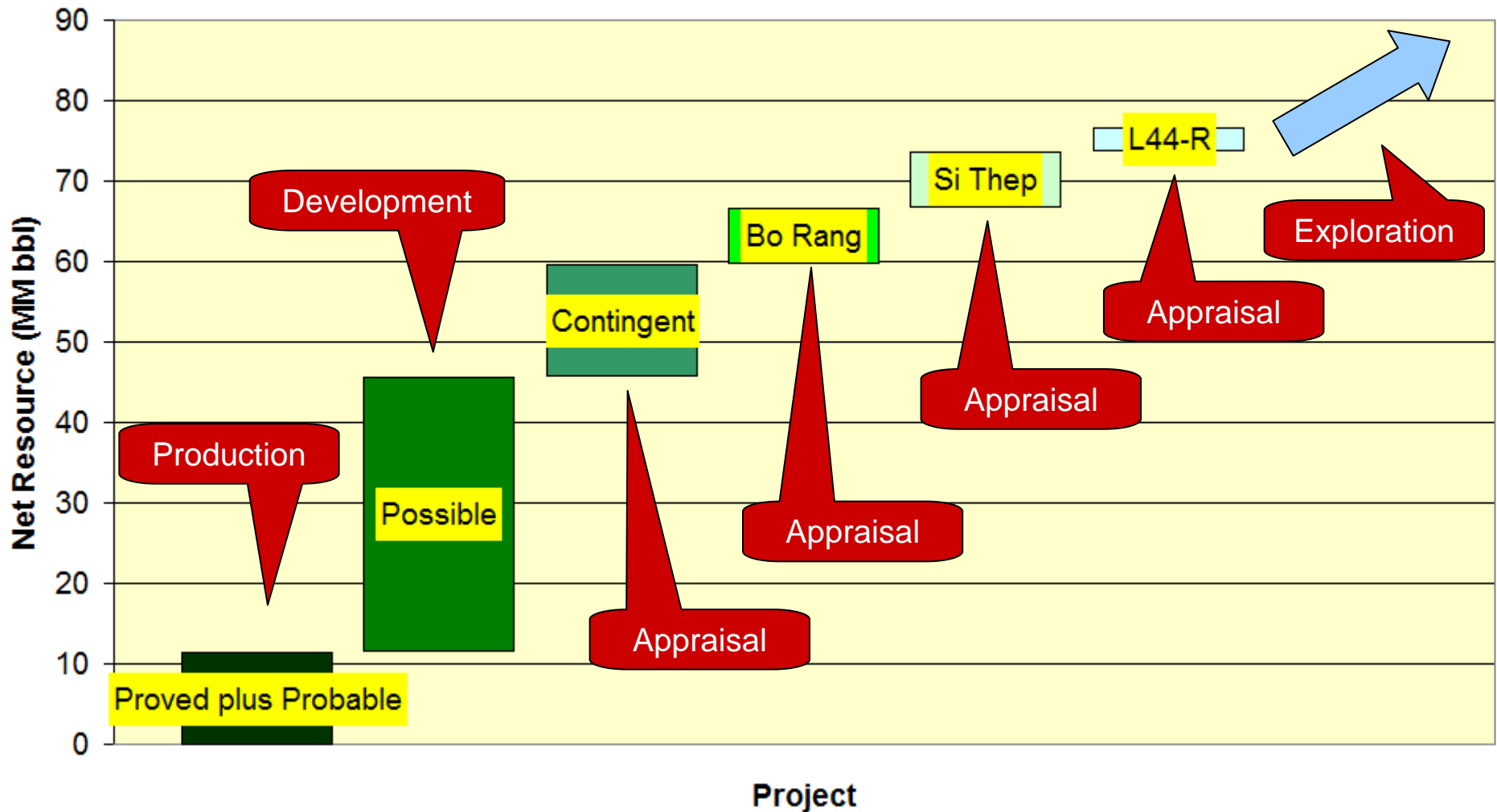
- 21 new well sites currently being prepared/under construction
- Continuous well programme throughout 2008 into 2009 with two rigs contracted





L33/43 Possible Reserves Growth

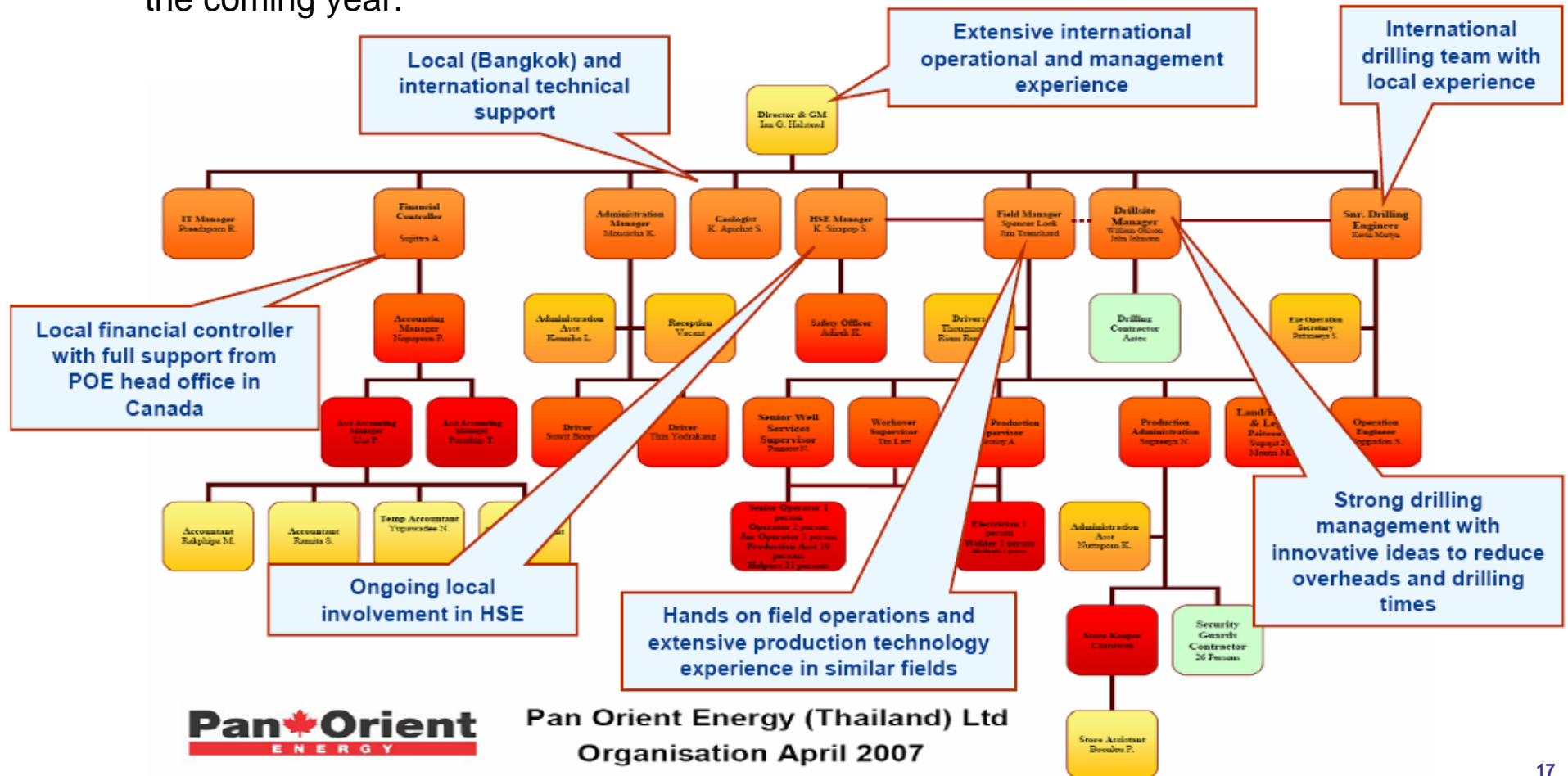
Net Carnarvon Resources





L33/43 & L44/43 - Operator

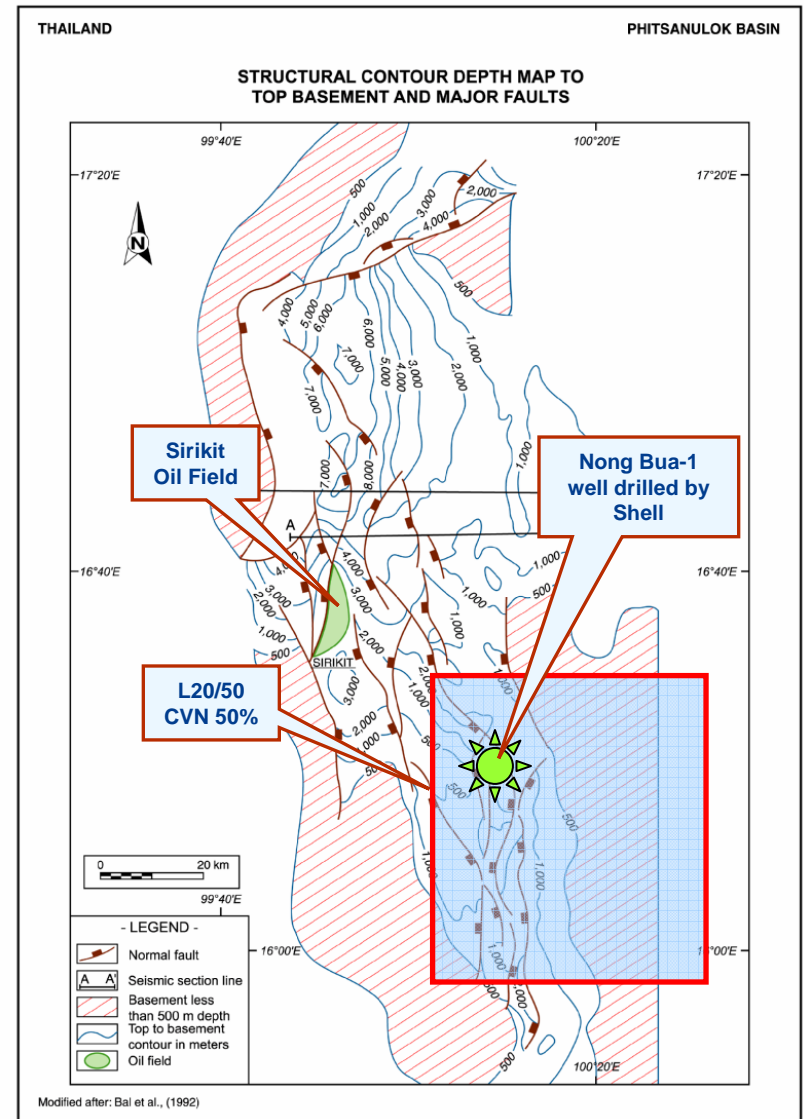
- **Pan Orient (JV operator)** has established a strong technical and operational team in Thailand with qualified expatriate staff managing a team of over 100 employees. This will underpin further growth in production and drilling activity over the coming year.





New Permit L20/50

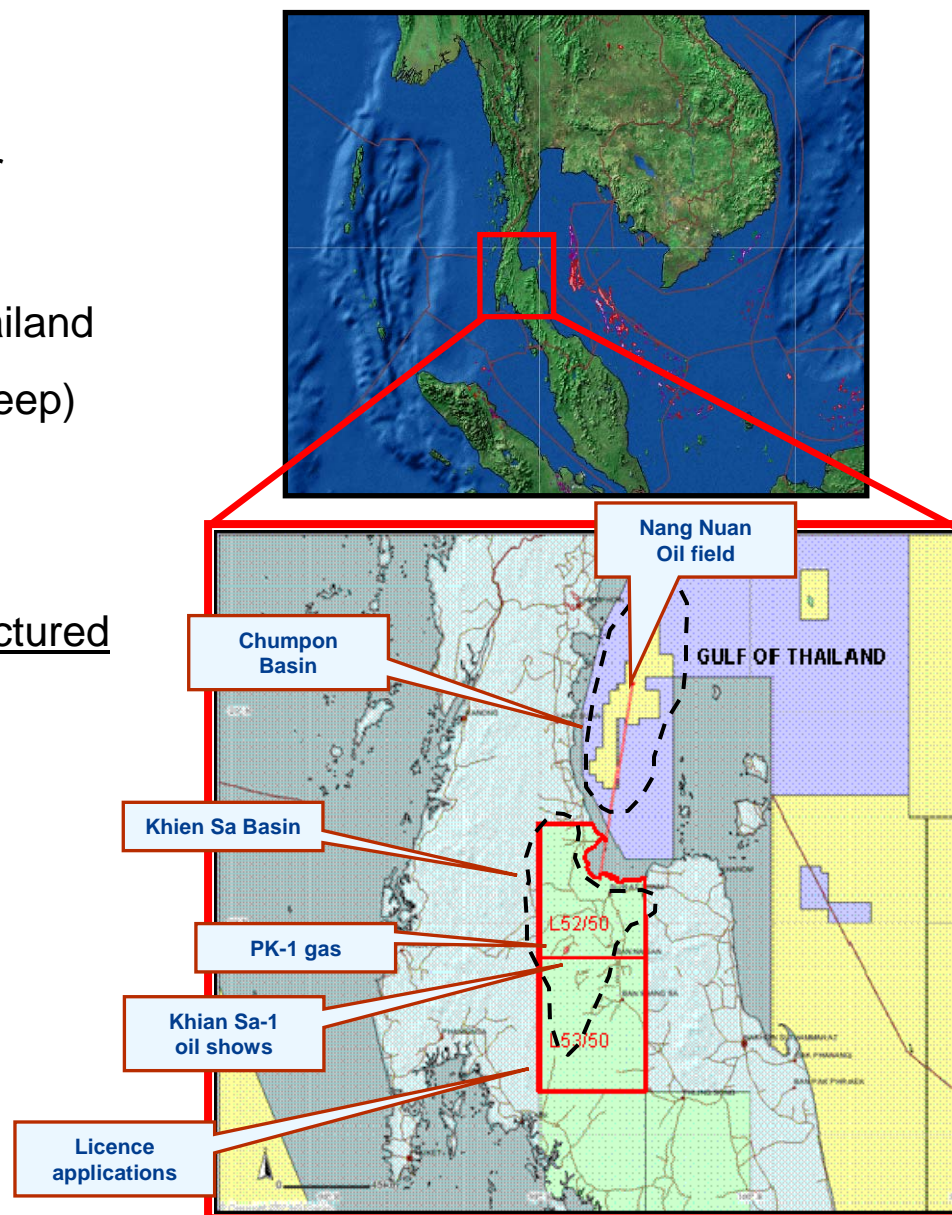
- Carnarvon 50% interest and operator
- Southeast and on trend of large, 200 million barrel Sirikit Oil Field (produced over 150 mmbbls and still producing ~20,000bopd)
- ~1,000km 80's vintage 2D seismic to be reprocessed
- Nong Bua-1 drilled by Shell with excellent oil shows & potential oil column in sandstone
- Well test performed without pump
- Initial analysis suggests a simple pumping operation would likely have been commercial at current oil prices
- Existing infrastructure allows quick tie-in
- Analysis suggests potential for fractured volcanics similar to L44/43
- Aeromag survey May/June 2008
- Redrill of historic well targeted for late 2008
- Seismic early 2009





L52 & L53 Applications

- Carnarvon 50% - Pearl Oil operator
- Carnarvon/Pearl Joint Venture only bidder
- 2 large onshore permits – 6,950 sq kms
- Onshore extension of offshore Gulf of Thailand
- 6 wells drilled (4 shallow for CBM and 1 deep)
- Oil shows in Khian Sa-1
- Small gas discovery at PK-1
- Nearby Nang Nuan oil field offshore in fractured carbonates
 - Approx 5 mmbbls recovered
 - Max flow 10,540 bopd from 1 well
- Licences award anticipated 2008
- Seismic planned for 2009





Australia

WA-399-P

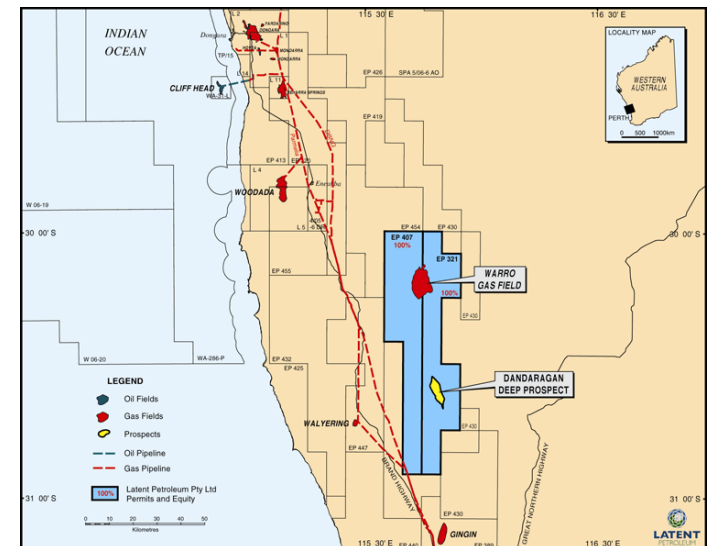
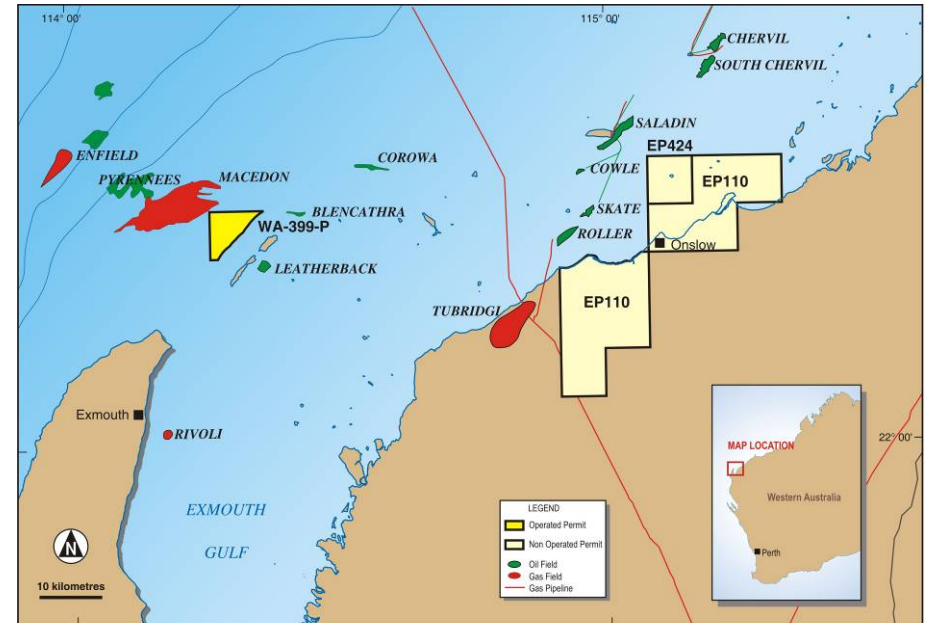
- Offshore Carnarvon Basin
- Carnarvon 50% and operator
- Seismic reprocessing just completed with 1 well to be drilled within next 12 months

EP110 & EP 424

- Offshore Carnarvon Basin
- Carnarvon 35%
- Finalising seismic reprocessing

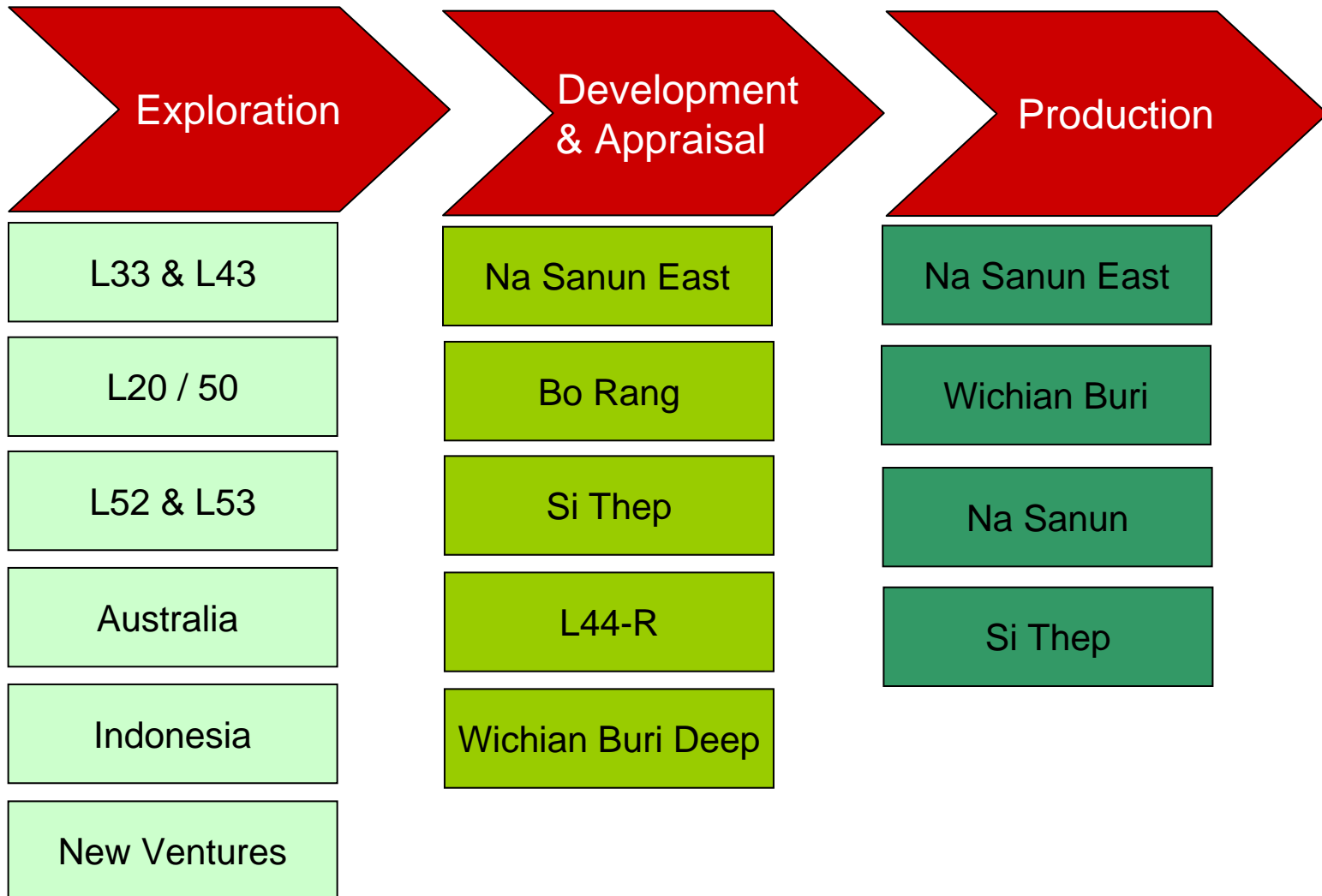
EP 321, EP 407

- Perth Basin
- ORRI 2.5% net wellhead value at Warro Gas Field
 - ~ 7 Tcf in place
 - Latent Petroleum operator
 - Requires fracking of reservoir
 - If successful first gas planned for 2009
 - Initial rate 20 mmcf/d, increasing to 100 mmcf/d
 - Peak rate Value to Carnarvon of ~A\$5mm/year pre tax





Project Pipeline





A busy year ahead

- 2 rigs operating, 16 wells planned for remainder 2008, targeting further significant reserve and production growth
- Mix of development, appraisal and exploration wells across a portfolio of projects
- \$23 million net cash and significant, growing cashflow ensure Carnarvon's current projects are fully funded for 2008 and beyond
- Current operations underpinning new growth opportunities



Contact



Ted Jacobson

Managing Director

Carnarvon Petroleum Limited

www.carnarvonpetroleum.com

T +61 8 9321 2665

F +61 8 9321 8867

Ground Floor, Suite 3, 16 Ord St

West Perth WA 6005

tjacobson@cvn.com.au



Carrick Ryan

Institutional Adviser

Hartleys Limited

www.hartleys.com.au

Member of the ASX

T +61 8 9268 2864

Level 6, 141 St Georges Terrace

F +61 8 9268 2830

Perth WA 6000

GPO Box 2777, Perth WA 6000

carrick_ryan@hartleys.com.au



Dale Bryan

Senior Manager - Corporate Finance

Hartleys Limited

www.hartleys.com.au

Member of the ASX

T +61 8 9268 2829

Level 6, 141 St Georges Terrace

F +61 8 9268 2830

Perth WA 6000

GPO Box 2777, Perth WA 6000

dale_bryan@hartleys.com.au



www.carnarvon.com.au