

31<sup>st</sup> August 2009  
Company Announcements Office  
ASX Limited

Dear Sirs,

**THAILAND L20/50 - 2D SEISMIC ACQUISITION COMPLETE**

Carnarvon Petroleum Ltd is pleased to announce that it has completed the acquisition of the 548 km of 2D seismic survey data in the L20/50 concession, onshore Thailand.

Carnarvon, as operator, and its partner Sun Resources NL, were committed to acquire 500 km of 2D seismic data in concession L20/50 to investigate the potential of this prospective acreage. Preliminary processing of these new data is of excellent quality and initial interpretations were encouraging enough to extend the survey. Approximately 48 km of new data acquisition was added to the planned survey to further enhance the imaging of potential hydrocarbon kitchens and adjacent leads within the block

Carnarvon, and partner Sun Resources, were granted the L20/50 exploration concession in January of 2007. The L20/50 concession is situated approximately 30 kms to the southeast and on trend with the largest onshore oil field in Thailand at Sirikit. The permit is situated approximately 60 km to the west of Carnarvon's 40% owned Petchabun Basin producing assets.

The concession covers around 4,000 km<sup>2</sup> and is lightly explored. Prior to the recording of these new data, the only data available over the concession comprised approximately 1,000 km of 1980's vintage 2D seismic data in paper format and six wells also in paper format (three shallow at around 500m and three deeper).

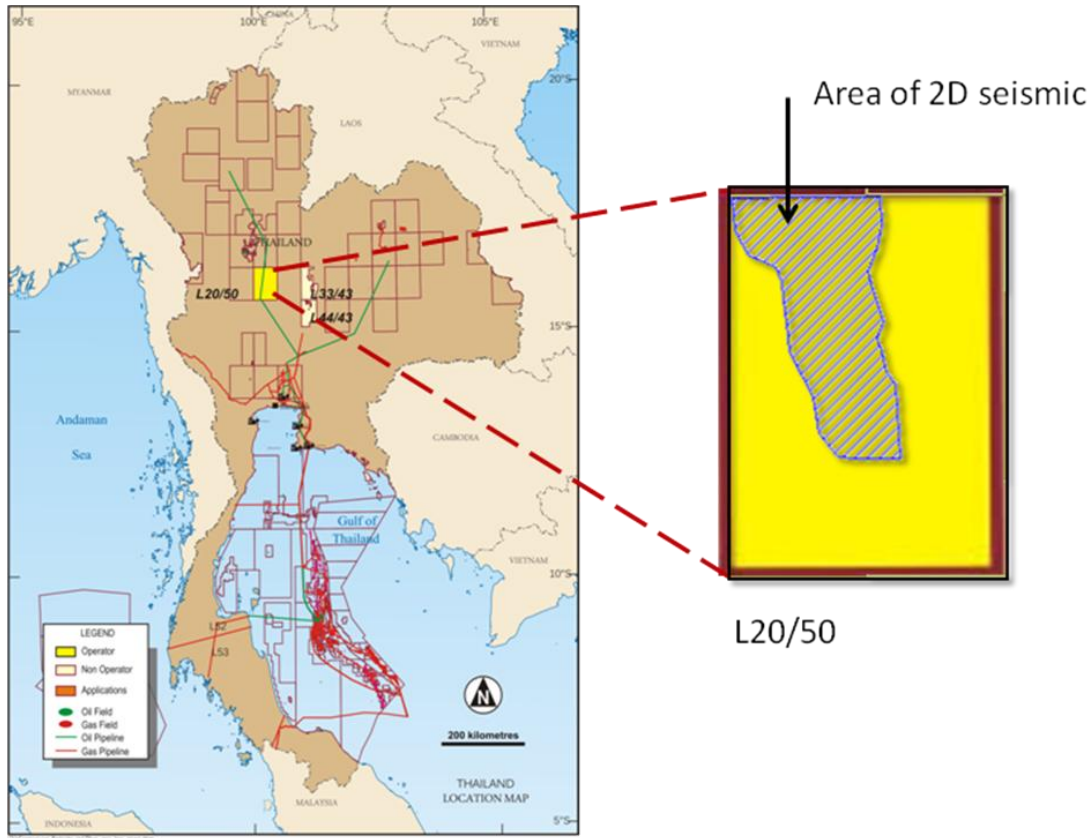
Geological analysis of seismic and previous drilling data has concluded that a number of play types are apparent, including Sirikit style fans, Wichian Buri style sandstones and Na Sanun style volcanics.

The processing and interpretation of the new data, incorporating reprocessing of the old paper lines, will be fast tracked to allow for a decision on the location of up to 4 exploration wells to be drilled in 2010.

Yours faithfully,  
Carnarvon Petroleum Limited



Ted Jacobson  
Chief Executive Officer



**Permit Holders L20/50**

**Carnarvon Petroleum Ltd (Operator) 50%**  
**Sun Resources NL 50%**